

**COBALT SAPPHIRE BBG-2110-4Ho/4Sio • ST 2110 - 20/22 Quad Channel JPEG-XS\* Mini Converter with 12G SDI and HDMI**

**SAPPHIRE**  
CONVERTERS



**NEW**  
**4K** SOLUTION

The **COBALT SAPPHIRE BBG-4Ho/4Sio Quad channel SMPTE ST 2110 - 20/22 baseband to HDMI / SDI converter unit with four simultaneous HDMI and four simultaneous SDI outputs.**

This mini converter addresses the need to display received baseband and JPEG-XS\* content on HDMI monitors in a simple and cost-effective way. The mini converter is designed to be mounted behind the monitor. The converter includes Quad SFP cages with support for 10G and 25G Ethernet ports, additional 1Gb copper Ethernet port for out-of-band management, support for SMPTE ST 2022 7 Seamless Switching up to Class C operation for WAN environments. Support for NMOS IS 04/IS 05 control and management (both in-band and out-of-band) and in-band PTP support. The **SAPPHIRE BBG** units are the ideal choice for directly displaying incoming baseband and JPEG-XS\* content on HDMI monitors, including content originating from a WAN connection. The units can be mounted directly behind the monitor and will not take up any rack space. This unit features an active cooling (fan).

**Note:** The SAPHIRE BBG-2110-4Ho/4Sio currently supports 1 path of 4K. The other 3 paths support up to 1080p.

## Features

Converts 2110 / JPEG-XS* streams with associated audio and ancillary data essences to 4) HDMI and 4) 12G SDI Outputs	Supports NMOS IS-04/IS-05 control, both in-band and out-of-band and SMPTE ST 2022-7 Seamless Redundancy up to Class C for WAN operation.
4 SFP cages *Initially only 2 will be used but the other two are there for future additional IP networks or possible SDI over fiber support.	Ethernet Web interface and DashBoard™ control
*Optional audio <b>-BBG-2110-4Ho/4Sio-AUD</b> 4) 3.5mm TRS jacks for consumer analog audio levels. Configurable in software as Analog Inputs or Outputs. *Optional AES HD15 break-out cable	Dual power supply connections for redundancy
Active cooling fan	Supports all popular formats: 720p, 1080i, 1080p, 2160p
Designed to be mounted behind the monitor. See mounting bracket options below. Dimensions: 4" x 5.5" x 1.5"	<b>Five Year Warranty</b>

## Options

+ JPEG-XS license option*	
- Audio daughter board allows for AES I/O and Analog audio I/O - Option*	- CB-BBG-CA75-BNCM AES break-out cable HD15 pin to BNC (4 Inputs & 4 Outputs, or 8 Inputs or 8 Outputs)
Additional power supply for redundant operation	

**COBALT SAPPHIRE BBG-2110-4Ho/4Sio • ST 2110 - 20/22 Quad Channel JPEG-XS\* Mini Converter with 12G SDI and HDMI**

**Ordering Information**

**BBG-2110-4Ho/4Sio** frame with redundant power connections and built-in network controller. Active cooling fan.

+ **JPEG-XS\*** License option

-**BBG-2110-4Ho/4Sio-AUD** Audio daughter board - AES I/O and Analog audio I/O

- **CB-BBG-CA75-BNCM** AES break-out cable HD15 pin to BNC (4 Inputs & 4 Outputs, or 8 Inputs or 8 Outputs)

- **PS-40W-761K** Spare / Redundant power supply (1 power supply included with purchase)

**Mounting Accessories:**

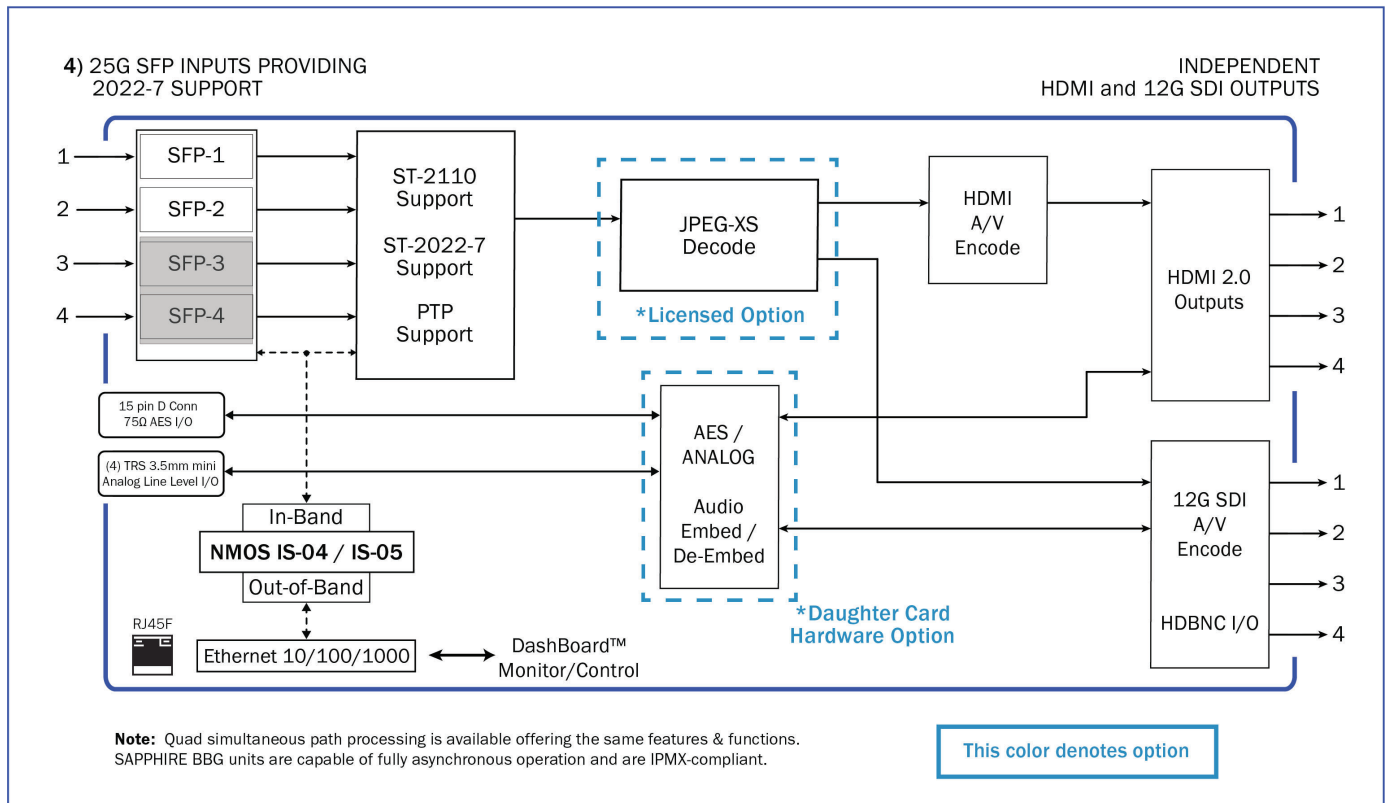
- SAPPHIRE BBG-Desk-top Stand
- SAPPHIRE BBG-Arm Bracket (VESA)
- SAPPHIRE BBG-Wall Bracket
- SAPPHIRE BBG-Monitor Rack Rail Bracket

**Note:** All specifications are preliminary and subject to change.

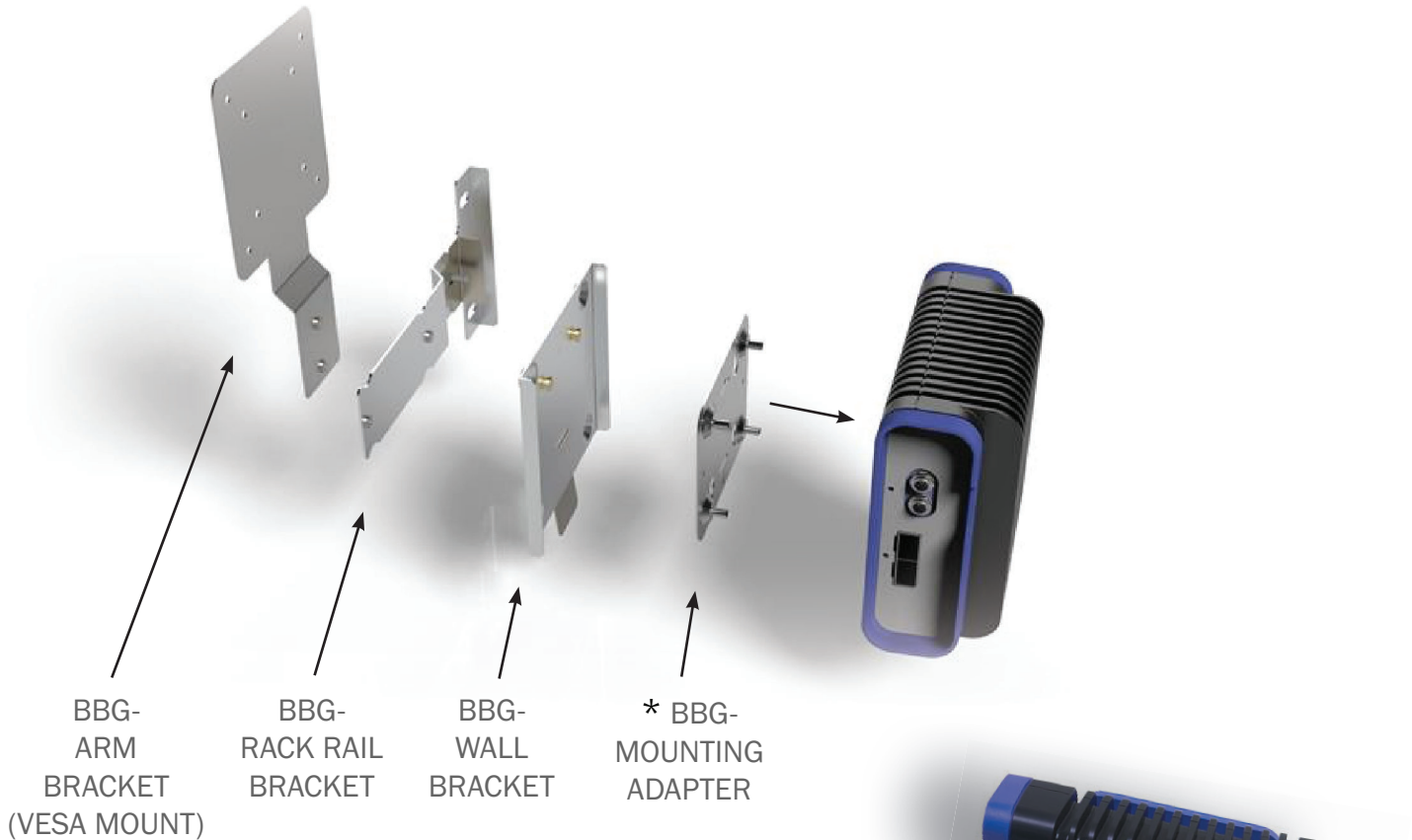
**COBALT SAPPHIRE BBG-2110-4Ho/4Sio**

Quad channel converter from IP to HDMI and 12G SDI

Preliminary Block - Subject to change without notice



COBALT SAPPHIRE BBG-2110-4Ho/4Sio • ST 2110 - 20/22 Quad Channel JPEG-XS\* Mini Converter with 12G SDI and HDMI



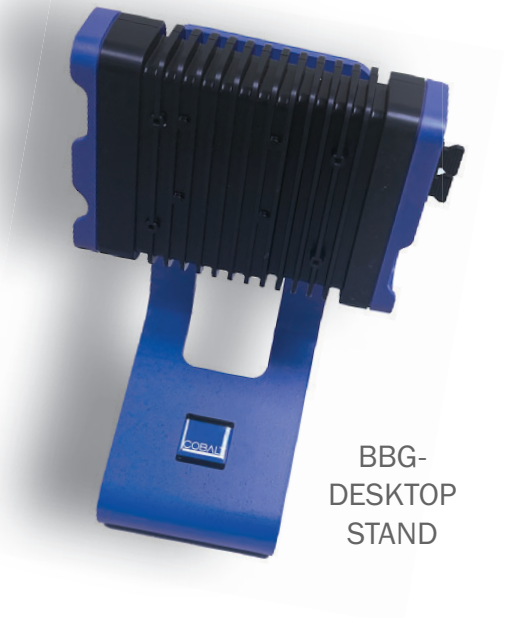
\* The mounting adapter is included with all bracket purchases

**Options and Accessories:**

- SAPPHIRE BBG- Arm Bracket (VESA MOUNT)
- SAPPHIRE BBG- Rack Rail Bracket
- SAPPHIRE BBG- Wall Bracket
- SAPPHIRE BBG- Desktop Stand
- CB-BBG-CA75-BNCM | AES break-out cable HD15 pin to BNC (4 Inputs & 4 Outputs, or 8 Inputs or 8 Outputs)



- Spare / Redundant power supply PS-40W-761K



BBG-DESKTOP STAND