

This release is intended for the following WAVE Control Series Panels:

- WAVE Control Series CP-44
- WAVE Control Series CP-78
- WAVE Control Series CP-84L
- WAVE Control Series CP-42L

You can update your WAVE Control Series Panels by downloading the new Update firmware by going to the **Support>Firmware** link at www.cobaltdigital.com ([Firmware | Audio/Video Production Products | Cobalt Digital](#)).

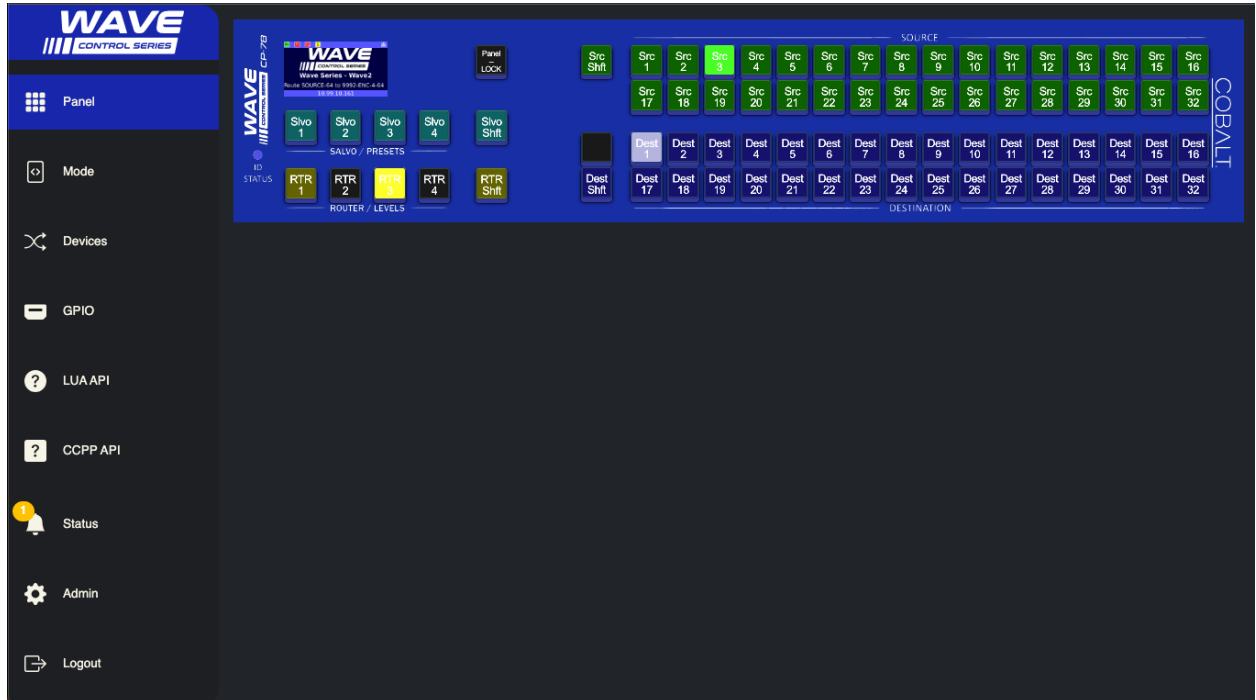
Refer to the **Firmware Update Instructions**, which provides instructions for downloading the latest firmware for your control panel onto your computer, and then uploading it to your controller through DashBoard™.

The following table lists released software versions and describes the corresponding functions additions, improvements and/or corrections

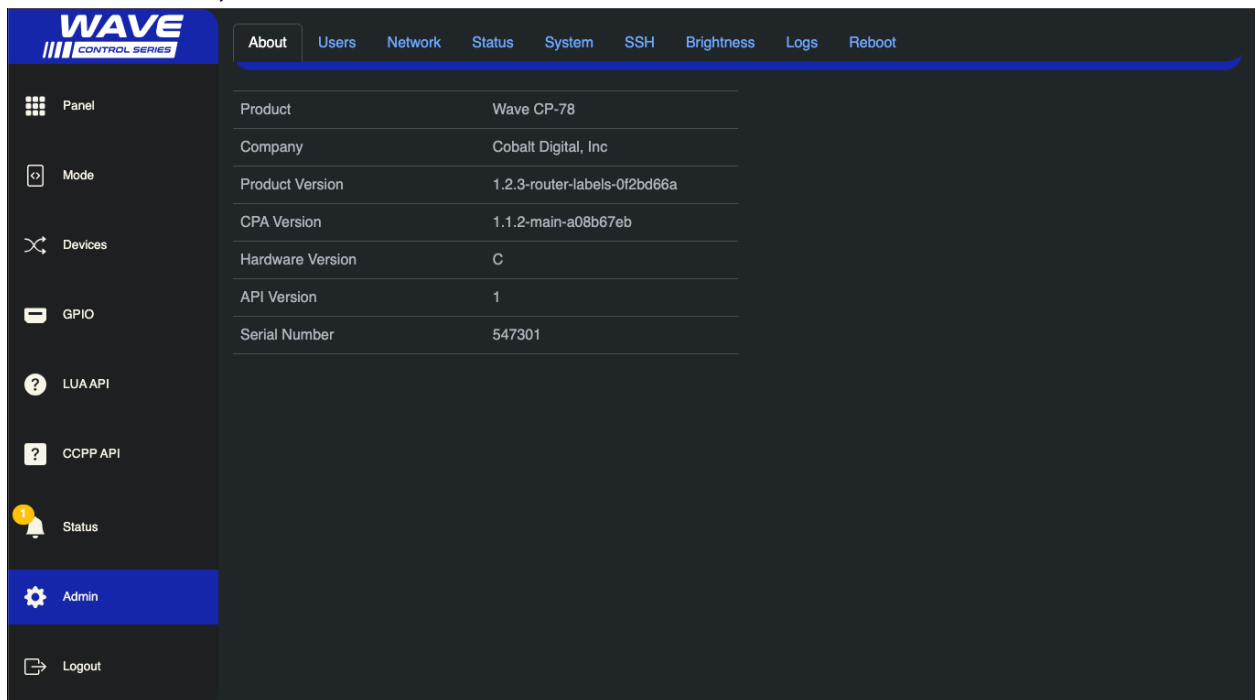
Firmware Version	Description
WAVE Series Control Panel Release v1.3.2	<p>Added Features</p> <ul style="list-style-type: none">• HTTP Endpoint Device Support: WAVE control panels can now control other Cobalt devices such as a mutliviewer via HTTP Endpoint support.• HTTP Responses can be piped into a JSONPath interpreter to extract values in Lua.• Lua can extract the Wave Router source/destination labels.• Added new Lua scripts that permit the control panel to function as a Destination->Source->Take or a destination-oriented control for Wave routers.• LCD Display enhancements for units that have a display.

Firmware Update Instructions

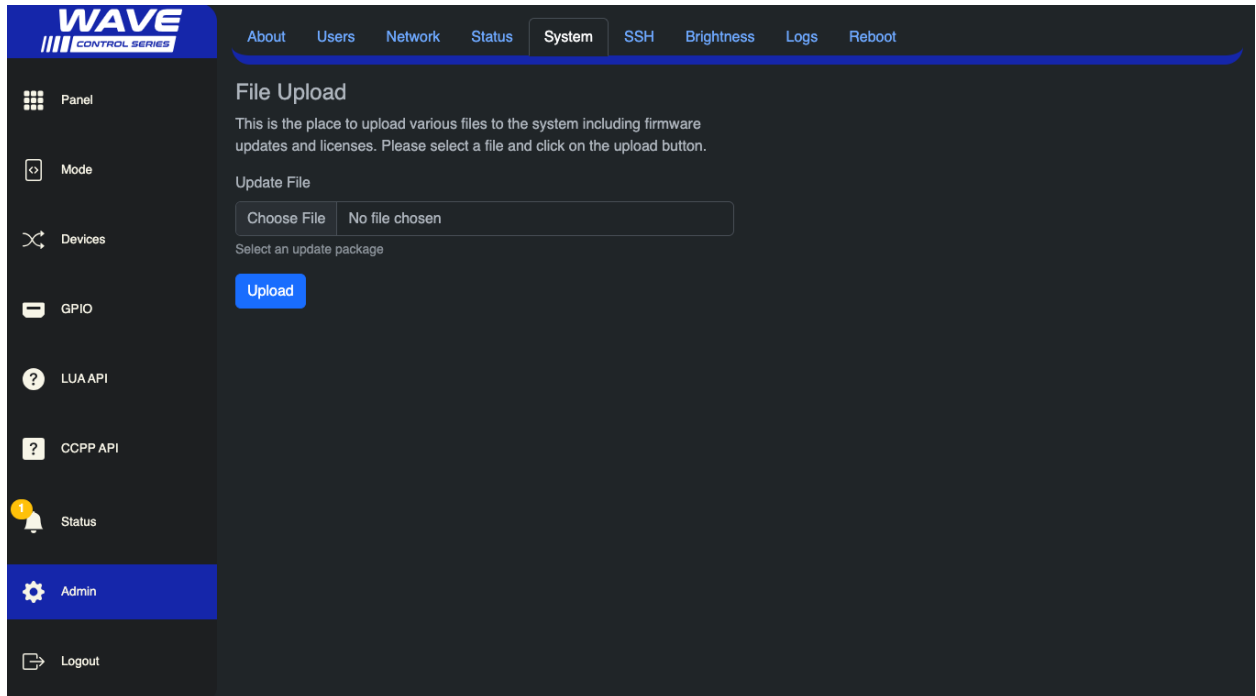
1. Open the WAVE Control Series user interface. A page similar to the following is displayed:



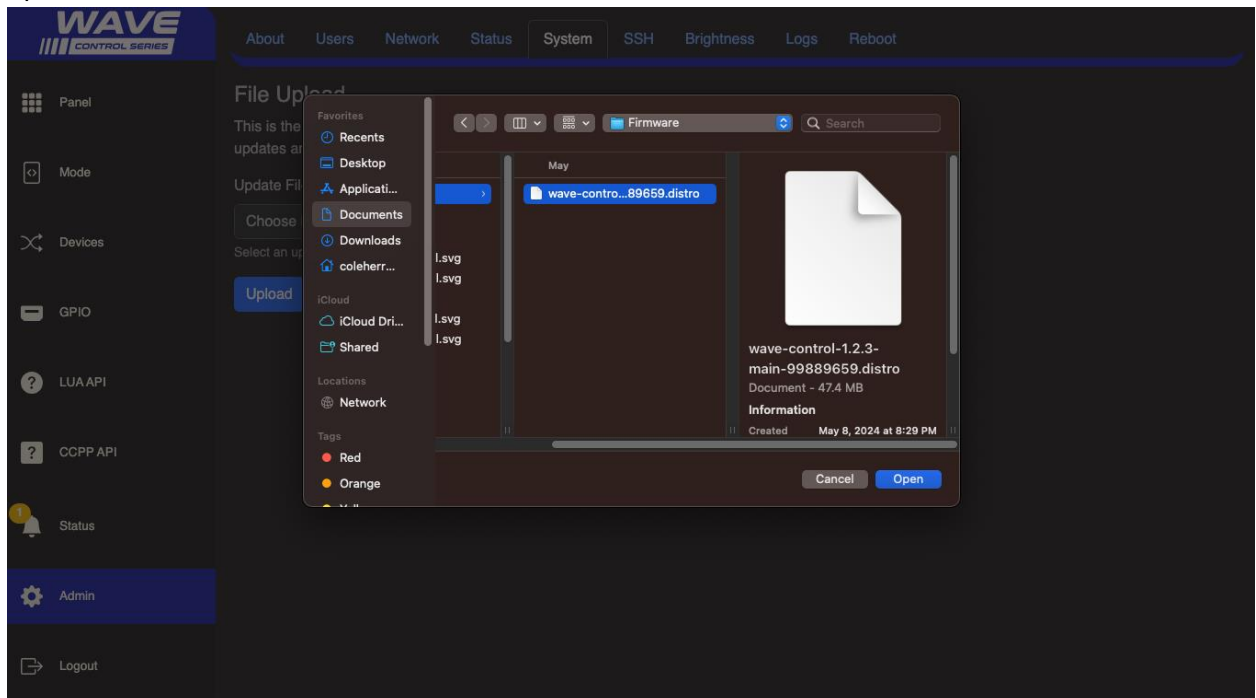
2. From the sidebar, select **Admin**.



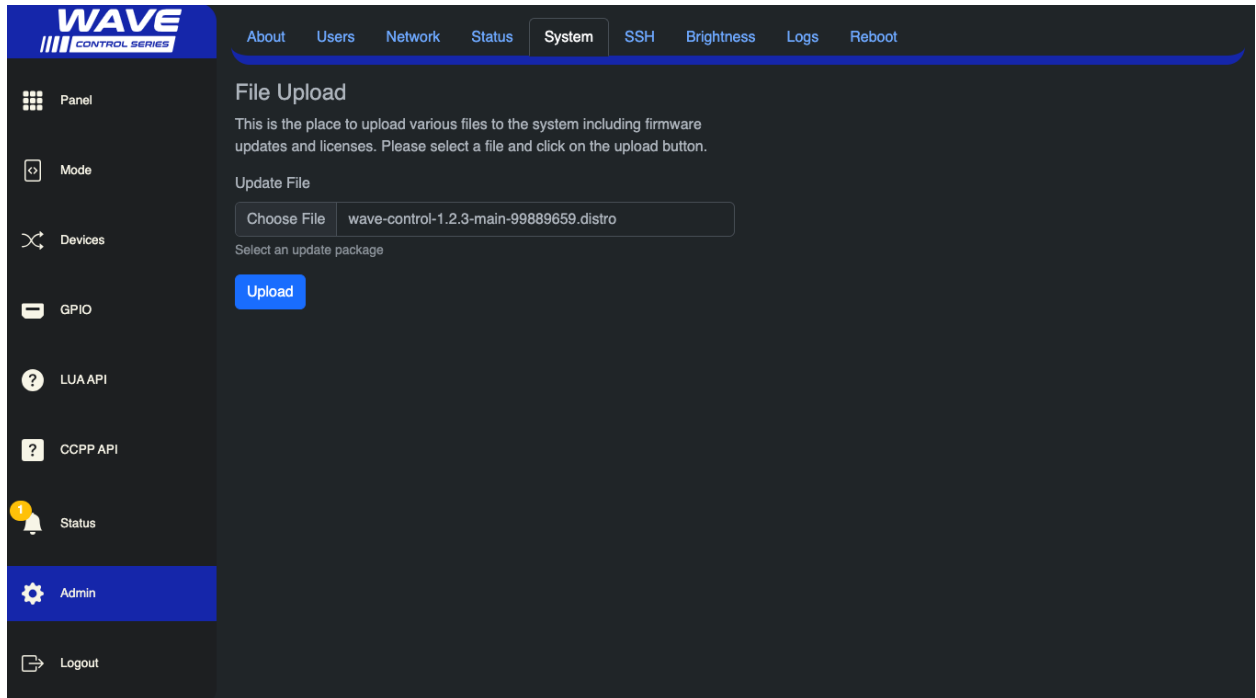
3. Select the **System** tab at the top of the Admin page.



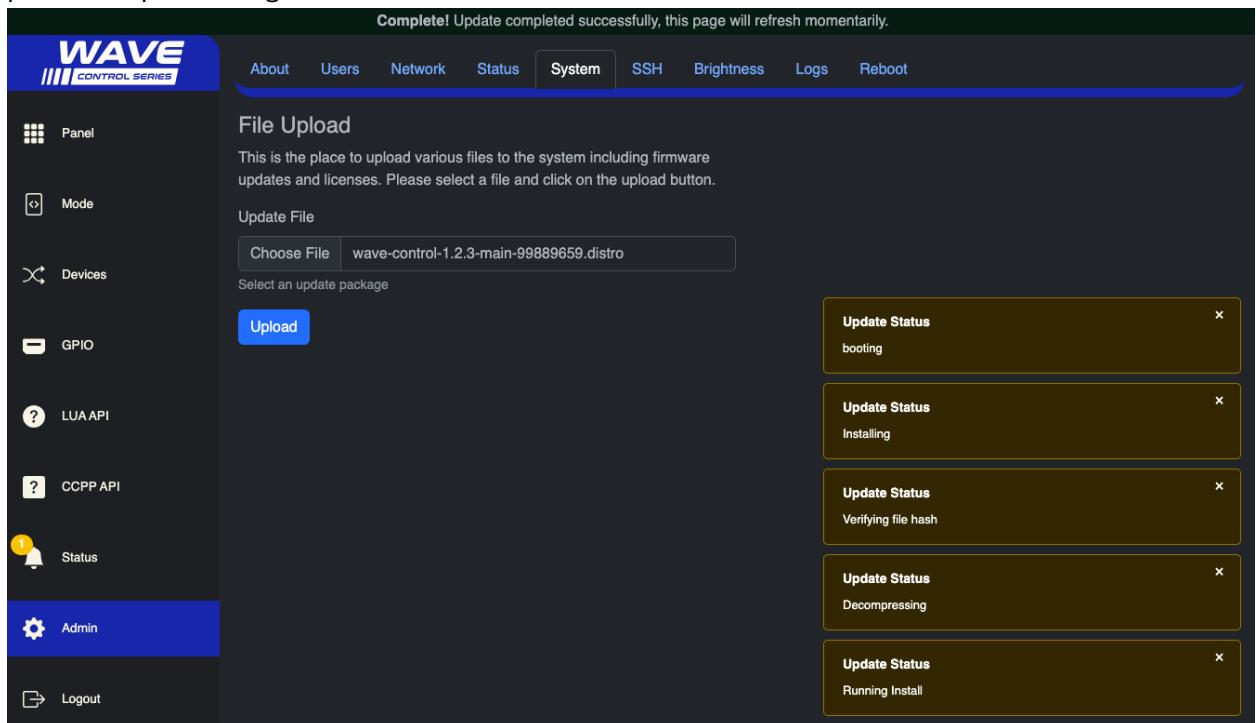
4. Click **Choose File** to open the OS file manager and then click **Open** to select the firmware update .distro file.



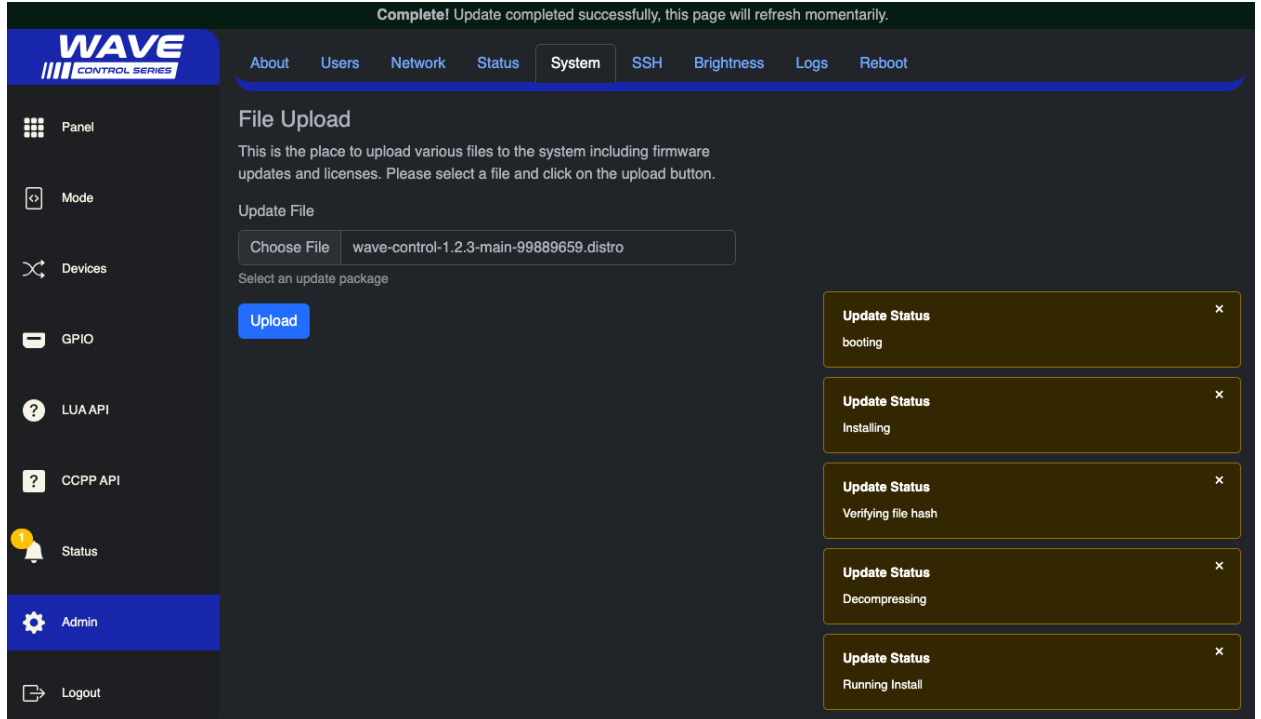
- Once the firmware update file is selected, click **Upload** from the Upload page.



- The upload process begins, which will generate several notifications of what the update process is performing.



- Once the update completes, a banner at the top of the page informs the user to wait for the panel to reboot.



- After the panel reboots, the user interface closes and returns to the login page.

