

COBALT SAPPHIRE BBG-2110-4Hi/4Sio •

ST 2110/IPMX Quad-Channel Converter with 12G SDI and HDMI 2.0 Inputs

SAPPHIRE
CONVERTERS



The COBALT SAPPHIRE BBG-2110-4Hi/4Sio Quad-channel HDMI/SDI to IPMX/SMPTE ST 2110 converter unit with four simultaneous HDMI and SDI inputs.

The unit features dual SFP cages with support for 10G and 25G Ethernet ports with an additional 1Gbps copper Ethernet port for out-of-band management.

The unit supports SMPTE ST 2022 7 Seamless Switching up to Class C operation for WAN environments.

The unit also supports NMOS IS 04/IS 05 control and management (both in-band and out-of-band) and in-band PTP support.

*Optional JPEG-XS compressed ST 2110-22 requires a license.

Note: The SAPPHIRE BBG-2110-4Hi/4Sio currently supports 1 path of 4K. The other 3 paths support up to 1080p.

FEATURES

(4) SFP cages – (2) 10/25G IP transport and (2) reserved for future use	Supports resolutions of: 720p, 1080i, 1080p, and 2160p (2160p is available on the first path only) Supports frame rate of: 23.98, 24, 25, 29.97, 30, 50, 59.94, and 60
(4) Bidirectional SDI I/O, either all inputs or all outputs	Asynchronous operation
(4) HDMI 2.0 Inputs	IPMX ready
(1) RJ45 Ethernet Port 100/1000 for communication and control	(1) Reference Input (SYNC IN) and (1) Reference Output (SYNC OUT) (reserved for future use)
Supports NMOS IS-04/IS-05 control, both in-band and out-of-band and SMPTE ST 2022-7 Seamless Redundancy up to Class C for WAN operation	(2) 12VDC/4A Redundant Inputs Typical Power Consumption < 35 Watts
*Optional audio - BBG-4Hi/4Sio-AUD with (4) 3.5mm TRS jacks for consumer analog audio levels. Configurable in software as Analog Inputs or Outputs.	Active cooling fan
Five Year Warranty	Dimensions 5.8" x 7.85" x 1.6"

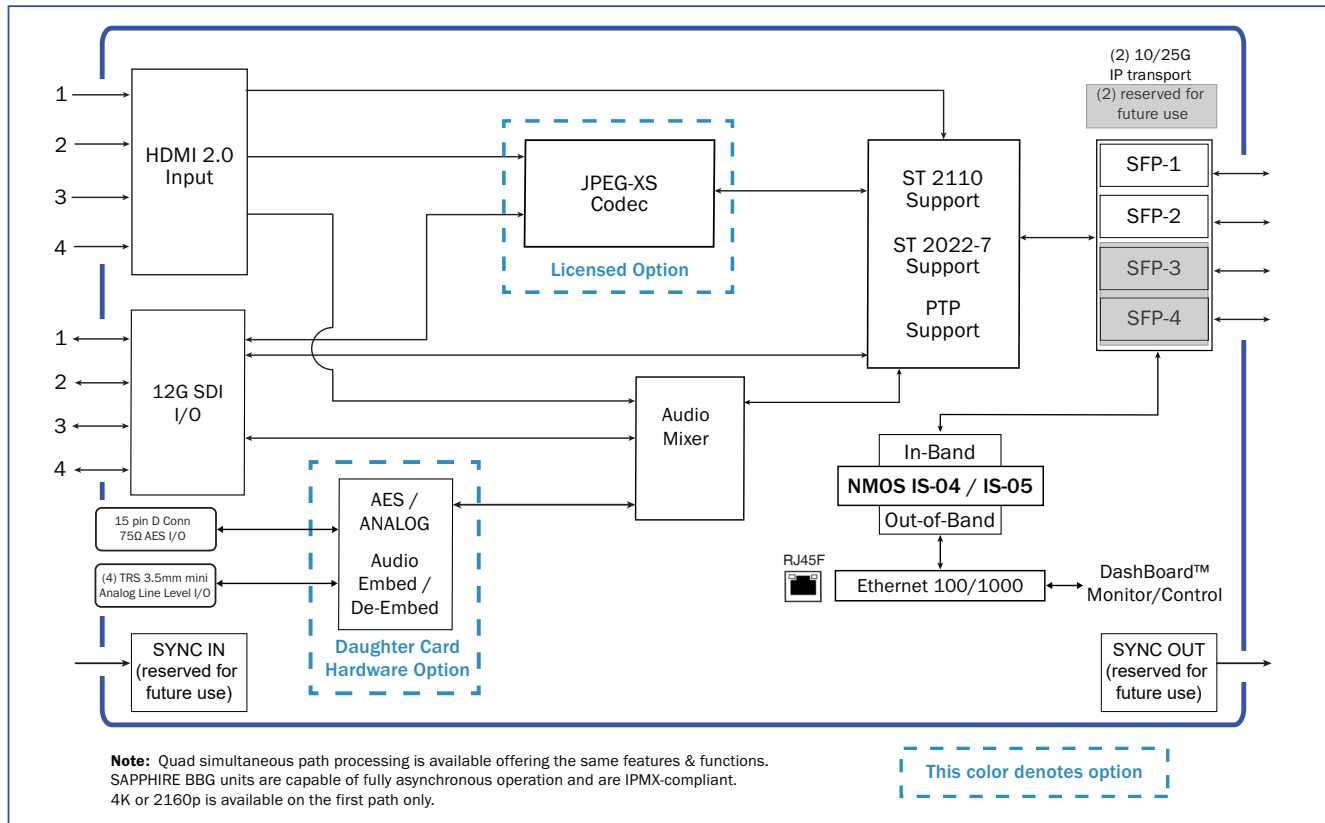
OPTIONS

- BBG-2110-4Hi/4Sio-AUD Audio daughter board - AES I/O and Analog audio I/O (must be factory-installed)	- PS-40W-761K Additional power supply for redundant operation
+ JXS-SAPPHIRE-4K-QUAD includes JPEG-XS license (Adds JPEG-XS TR-08 processing)	

COBALT SAPPHIRE BBG-2110-4Hi/4Sio •

**ST 2110/IPMX Quad-Channel Converter
with 12G SDI and HDMI 2.0 Inputs**

BLOCK DIAGRAM



ORDERING INFORMATION

BBG-2110-4Hi/4Sio

+ **JXS-SAPPHIRE-4K-QUAD** includes JPEG-XS license

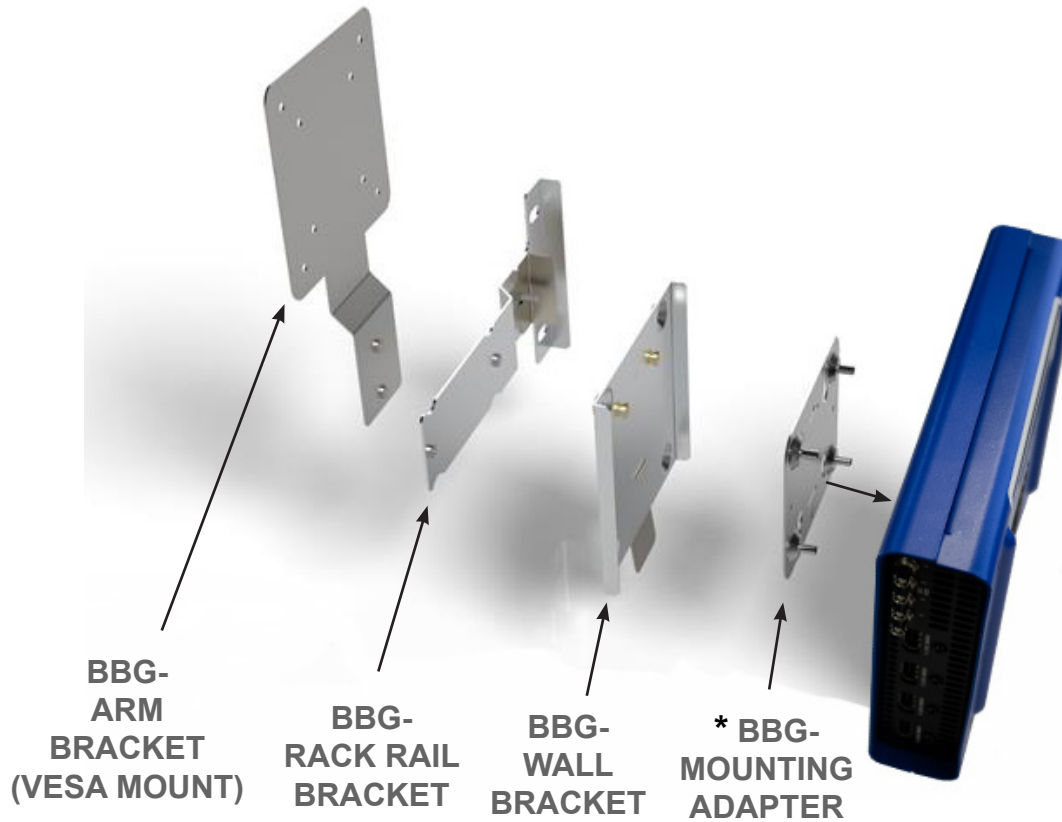
- **BBG-2110-4Hi/4Sio-AUD** Audio daughter board - AES I/O and Analog audio I/O (must be factory-installed)

- **PS-40W-761K** Spare / Redundant power supply (1 power supply included with purchase)

Mounting Accessories:

- **SAPPHIRE BBG-Desk-top Stand**
- **SAPPHIRE BBG-Arm Bracket (VESA)**
- **SAPPHIRE BBG-Wall Bracket**
- **SAPPHIRE BBG-Monitor Rack Rail Bracket**

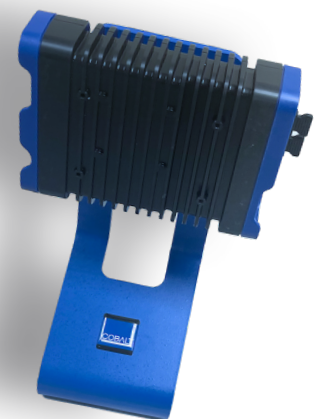
Note: All specifications are preliminary and subject to change.



* The mounting adapter is included with all bracket purchases

Options and Accessories:

- SAPPHIRE BBG- Arm Bracket (VESA MOUNT)
- SAPPHIRE BBG- Rack Rail Bracket
- SAPPHIRE BBG- Wall Bracket
- SAPPHIRE BBG- Desktop Stand
- PS-40W-761K Spare / Redundant power supply



BBG-DESKTOP STAND
(SAPPHIRE BBG-2110-H/S
model shown)