

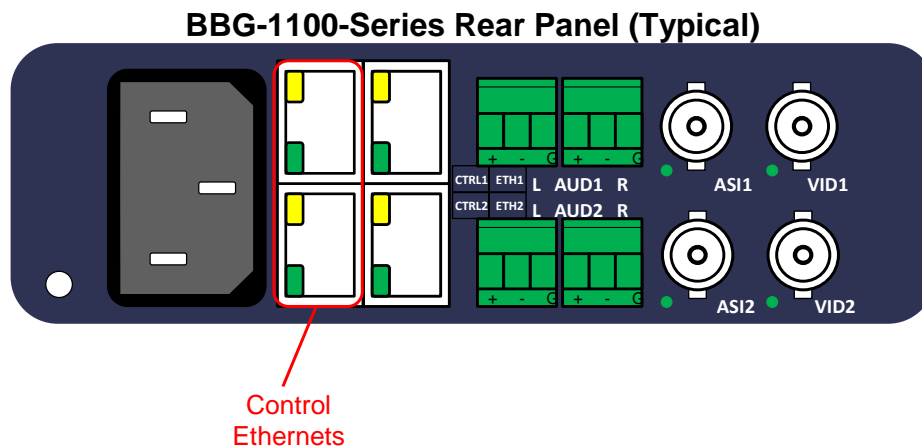


BBG-1100-Series Quick Start

The BBG-1100-Series standalone devices are managed through the Dashboard application. Dashboard can control the BBG-1100-Series devices as well as openGear frames (where BBG-1100 devices appear as a frame connection). The user interface for the BBG-1100-Series devices is essentially the same as the corresponding openGear cards.

The steps are as follows:

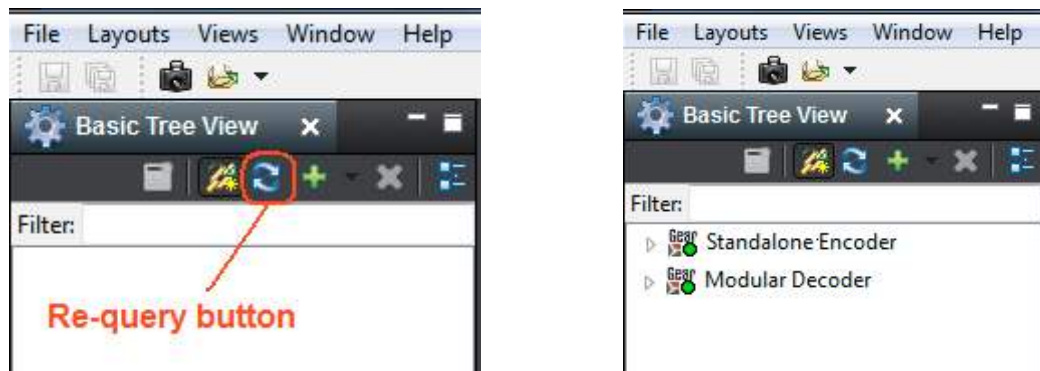
1. The first step is to install the Dashboard software on one or more control computers. Dashboard is available for Windows, Linux¹, and Mac OSX.
2. Connect the PC/Mac running Dashboard and the BBG-1100-Series device to the same network. For simplicity, even running an Ethernet cable between the two devices will work. The BBG-1100-Series device has auto-crossover capabilities, so any Ethernet cable will work. Connect the cable to a control ports in the BBG-1100-Series device, as illustrated below:



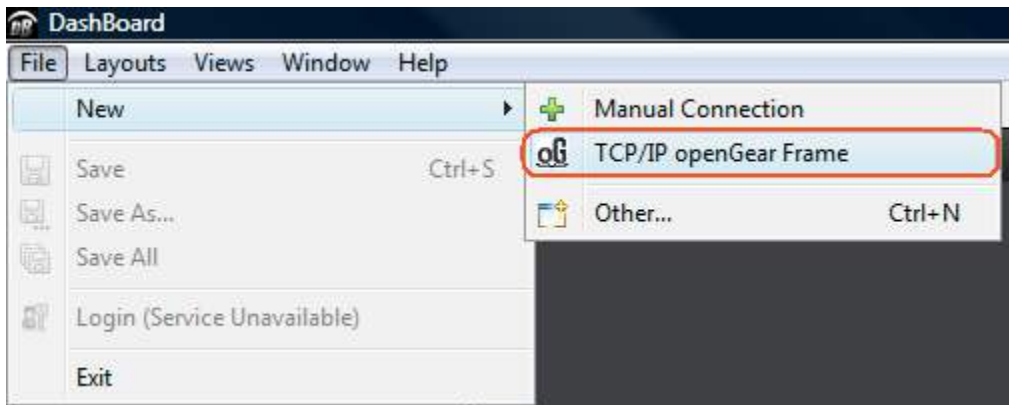
3. Using the front panel in the BBG-1100-Series device, change its control port IP address to be in the same subnet as the IP address of the computer running Dashboard. BBG-1100-Series devices are shipped with a factory-default IP address of **192.168.1.30**. The procedure to change the IP address using the front panel is as follows:

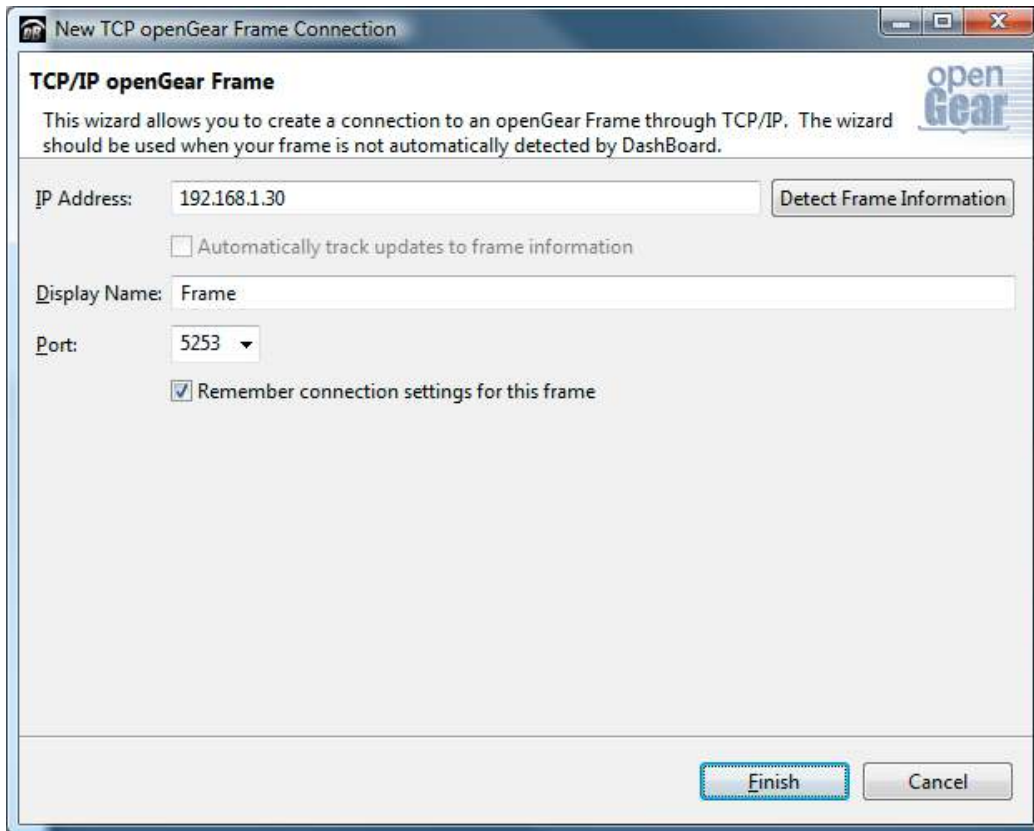
¹ Dashboard is not officially supported in 64-bit Linux distributions. Please consult the README.TXT file in the Linux directory for more details.

- a. Press the **Config** button.
 - b. Use the blue down button on the right side of the panel to select the **Network** entry. Press the round green button to select.
 - c. Select the **Change Config** option.
 - d. Select the **Control Port** option.
 - e. Follow the prompts to change the IP address, subnet mask and default gateway.
You can also configure a BBG-1100-Series device to use DHCP.
4. The Dashboard application should automatically find the BBG-1100-Series device and display it in the tree view on the left. If the device is not automatically found, click on the re-query button at the top of the Dashboard tree view, as indicated below. If found, BBG-1100-Series **Encoder** devices will be identified as **Standalone Encoder**, and BBG-1100-Series **Decoder** devices will be identified as **Modular Decoder**.



5. In the unlikely case that the BBG-1100-Series device is not automatically found by Dashboard, you can force a manual connection.
Select **File** → **New** → **TCP/IP openGear Frame**, enter the IP address of the BBG-1100-Series device, and click on **Finish**:





6. When the BBG-1100-Series device is available on Dashboard, open its user interface (by double-clicking on **Standalone Encoder** or **Modular Decoder** to open it, and then on the device name that appears in slot 0). You can now use DashBoard to further configure the device.
7. The two control ports in the BBG-1100-Series **encoder** devices are intended for redundancy. You can connect either one of them (or both) to your control network. The device will use whatever port is connected to respond to control operations.

Note on DashBoard Versions

DashBoard versions 4.0.0 and 4.1.0 have significant GUI performance issues when used with the BBG-1100-Series devices (GUI tabs may take noticeable time to update). It is recommended that **only** DashBoard versions **5.0.0 or higher** be used with the BBG-1100-Series device.