

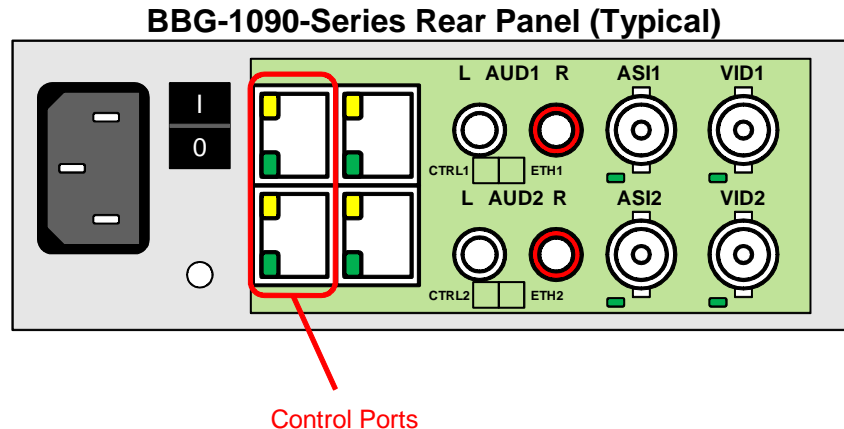


92XX-SA and BBG-1090-Series Quick Start

The –SA and BBG-1090-Series standalone devices (hereinafter referred to as “BBG-1090-Series”) are managed through the Dashboard application. Dashboard can control the BBG-1090-Series devices as well as openGear frames (where BBG-1090-Series devices appear as a frame connection). The user interface for the BBG-1090-Series devices is essentially the same as the corresponding openGear cards.

The steps are as follows:

1. The first step is to install the Dashboard software. Dashboard is available for Windows, Linux¹, and Mac OSX.
2. By default, the BBG-1090-Series devices are configured with a factory IP address of **192.168.1.30** and a subnet mask of **255.255.255.0**. In order to perform the initial configuration, you will need to configure the PC/Mac running Dashboard for an IP address in the same network. We suggest you use **192.168.1.2**. Once you gain access to the BBG-1090-Series device, you can reconfigure its IP address to whatever value you require, or configure it to run DHCP.
3. Connect the PC/Mac running Dashboard and the BBG-1090-Series device to the same network. For simplicity, even running an Ethernet cable between the two devices will work. The BBG-1090-Series device has auto-crossover capabilities, so any Ethernet cable will work. Connect the cable to a control ports in the BBG-1090-Series device, as illustrated below:

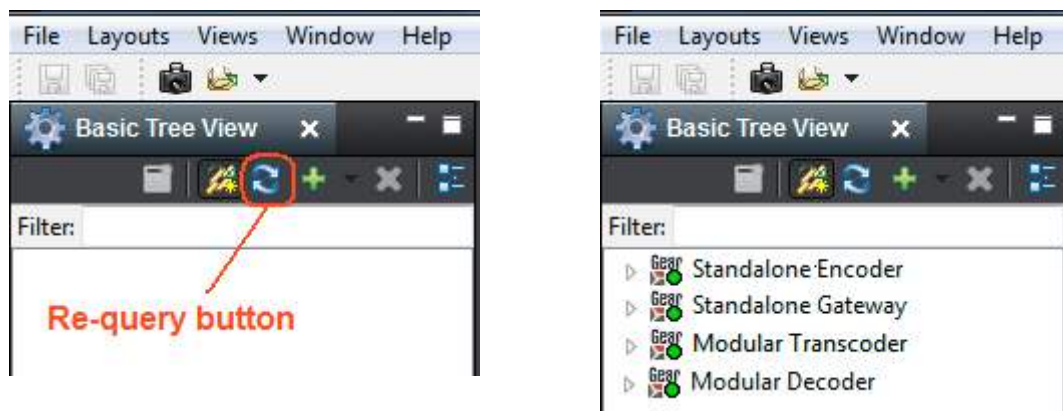


¹ Dashboard is not officially supported in 64-bit Linux distributions. Please consult the README.TXT file in the Linux directory for more details.

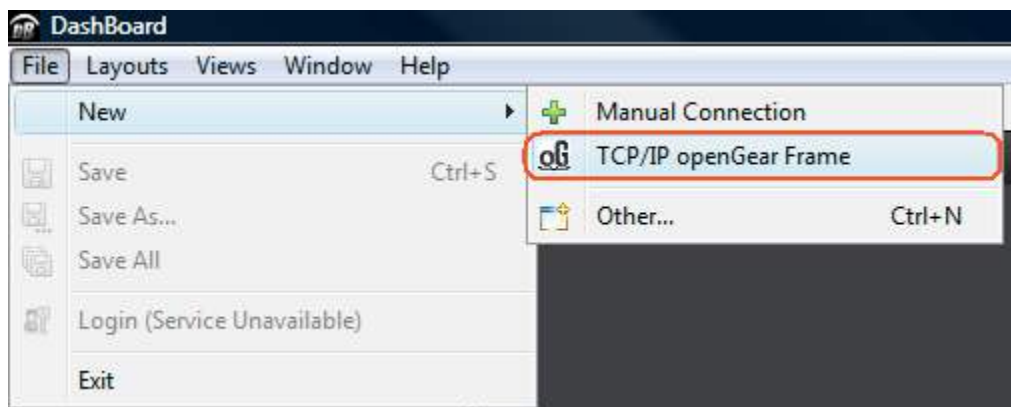
4. The Dashboard application should automatically find the BBG-1090-Series device and display it in the tree view on the left. If the device is not automatically found, click on the re-query button at the top of the Dashboard tree view, as indicated below.

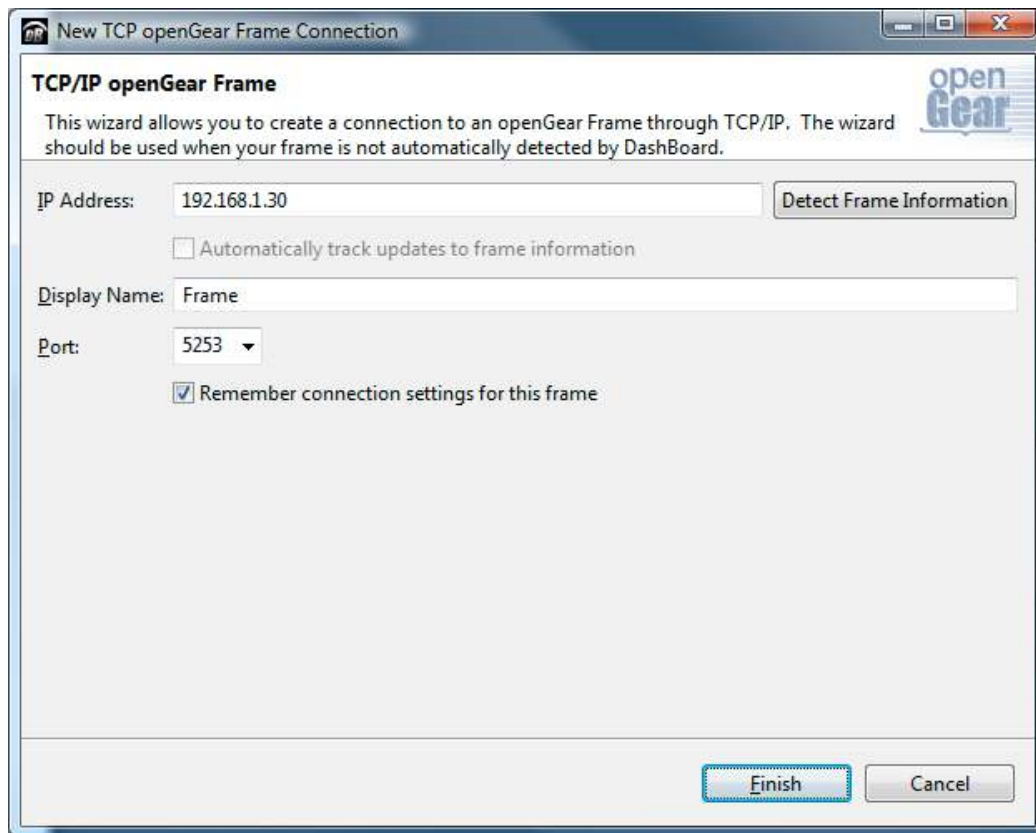
When found, the device is identified as follows:

- BBG-1090-Series **Encoder** devices are identified as **Standalone Encoder**
- BBG-1090-Series **Gateway** devices are identified as **Standalone Gateway**
- BBG-1090-Series **Transcoder** devices are identified as **Modular Transcoder**
- BBG-1090-Series **Decoder** devices are identified as **Modular Decoder**

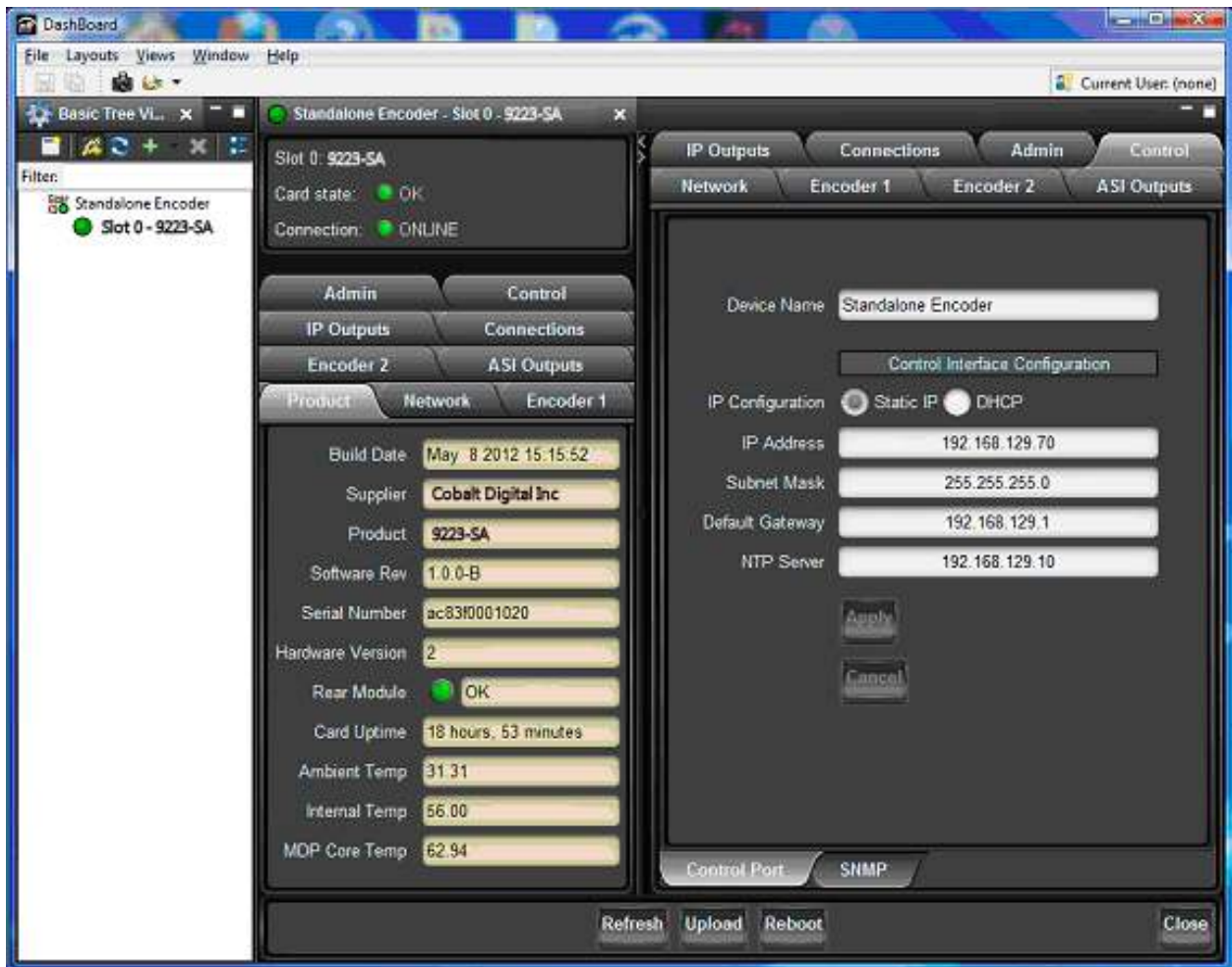


5. In the unlikely case that the BBG-1090-Series device is not automatically found by Dashboard, you can force a manual connection.
Select **File** → **New** → **TCP/IP openGear Frame**, enter the IP address of the BBG-1090-Series device, and click on **Finish**:





6. When the BBG-1090-Series device is available on Dashboard, open its user interface (by double-clicking on **Standalone Encoder**, **Standalone Gateway**, **Modular Transcoder** or **Modular Decoder** to open it, and then on the device shown in slot 0). Go to the **Control** tab on the right; you can now configure the IP address of the BBG-1090-Series device as desired. You can also rename the device if you wish.



7. Some BBG-1090-Series devices have two control ports. They are intended for redundancy. You can connect either one of them (or both) to your control network. The device will use whatever port is connected to respond to control operations.

Note on DashBoard Versions

DashBoard versions 4.0.0 and 4.1.0 have significant GUI performance issues when used with the BBG-1090-Series devices (GUI tabs may take noticeable time to update). It is recommended that **only** DashBoard versions **5.0.0 or higher** used with the BBG-1090-Series device.