

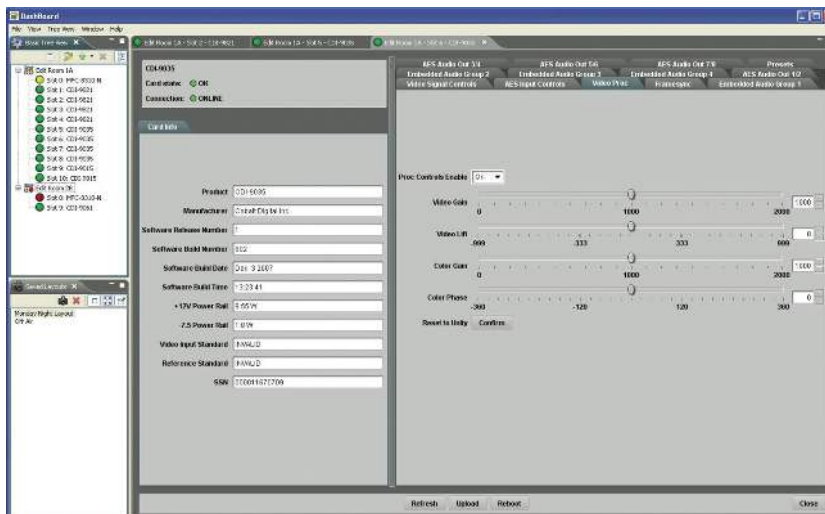
DashBoard™

DashBoard™ is a control / monitoring application for the openGear® platform. It is available at no cost, and works with Windows®, Mac® and Linux®.

DashBoard™ provides a centralized user interface for all populated frame slots, allowing users to view and control all frames and cards on a network with a consistent, easy-to-use graphical interface. Cards define their controllable parameters to DashBoard™, so the control interface is always up to date.

In addition to extensive control and monitoring capabilities with its intuitive GUI, DashBoard™ allows for easily performed card software updates. Software update files can be downloaded from the Cobalt Digital website and then uploaded through DashBoard™.

To communicate with DashBoard™, an openGear® frame must have the optional MFC-8320-N network card installed.



openGear

DashBoard

FEATURES

Free application can be downloaded at www.cobaltdigital.com/dashboard

Java based and runs in Windows®, Mac® and Linux®

Multiple frames can be connected to multiple control and monitoring stations

Automatic discovery of cards

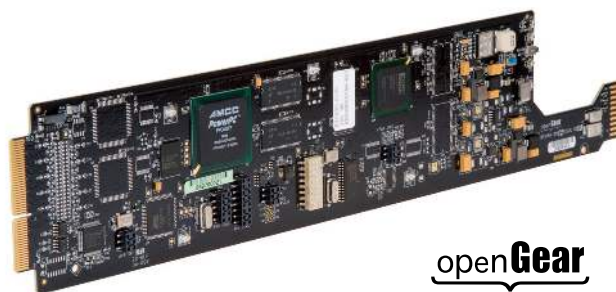
Software and firmware updates via ethernet

openGear® is a registered trademark of Ross Video Limited. DashBoard™ is a trademark of Ross Video Limited.

Network Controller Card

The MFC-8320-N is an optional network controller card that allows the 8321 openGear® frame to communicate with multiple copies of DashBoard™ or a Cobalt remote control panel via Ethernet and TCP/IP. This allows remote access to the openGear® frame across both LAN and WAN architectures. (HPF-9000 high-power frame comes standard with the Network Controller Card.)

The network controller card can also be purchased with SNMP support, for large scale monitoring implementation.



openGear

FEATURES

10/100 Mbit Ethernet Control

Enables multiple connections to DashBoard™

DataSafe™ feature stores all card parameters local to the frame, greatly reducing downtime if hot swapping solutions

SNMP agent software available as an option

Five year warranty

ORDERING INFORMATION

MFC-8320-N Network Controller Card for 20-Slot openGear® Frame- Allows remote control and monitoring of cards through DashBoard™ Software

MFC-8320-NS Network Controller Card for 20-Slot openGear® Frame - Allows remote control and monitoring of cards through DashBoard™ Software with SNMP Software Option

SNMP Software Option for MFC-8320-N: Provides SNMP (v1 and v2) control and monitoring

DB-VIEW DashBoard™ Option for compiling user folders

openGear® is a registered trademark of Ross Video Limited. DashBoard™ is a trademark of Ross Video Limited.