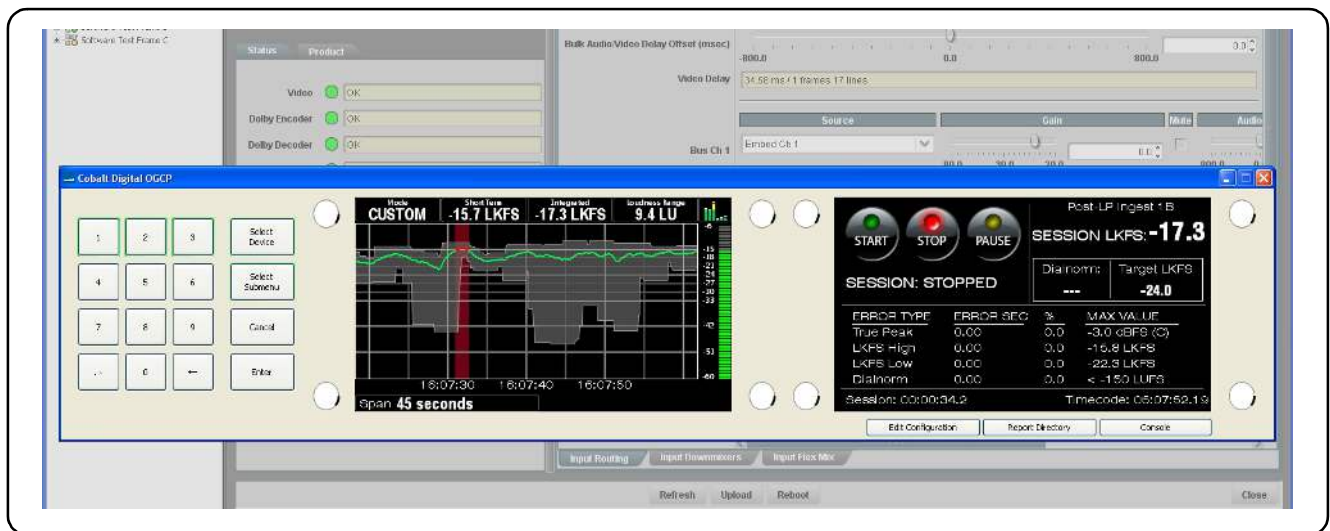


---

# WinOGCP

## Desktop Virtual Control Panel for Fusion3G® / COMPASS™ Cards



# *Product Manual*

---



### Cobalt Digital Inc.

2406 E. University Ave.  
Urbana, IL 61802  
Voice 217.344.1243 • Fax 217.344.1245  
[www.cobaltdigital.com](http://www.cobaltdigital.com)

---

## Copyright

©Copyright 2013, Cobalt Digital Inc. All Rights Reserved.

Duplication or distribution of this manual and any information contained within is strictly prohibited without the express written permission of Cobalt Digital Inc. This manual and any information contained within, may not be reproduced, distributed, or transmitted in any form, or by any means, for any purpose, without the express written permission of Cobalt Digital Inc. Reproduction or reverse engineering of software used in this device is prohibited.

## Disclaimer

The information in this document has been carefully examined and is believed to be entirely reliable. However, no responsibility is assumed for inaccuracies. Furthermore, Cobalt Digital Inc. reserves the right to make changes to any products herein to improve readability, function, or design. Cobalt Digital Inc. does not assume any liability arising out of the application or use of any product or circuit described herein. Some illustrations in this manual may depict WinOGCP with option **+LM** Audio Loudness Meter, which is **not** included as standard with WinOGCP.

## Trademark Information

**Cobalt**® is a registered trademark of Cobalt Digital Inc.

**FUSION3G**® and **COMPASS**® are registered trademarks of Cobalt Digital Inc.

openGear® is a registered trademark of Ross Video Limited. DashBoard™ is a trademark of Ross Video Limited. Other product names or trademarks appearing in this manual are the property of their respective owners.

Congratulations on choosing the WinOGCP Desktop Virtual Control Panel. Should you have questions pertaining to the installation or operation of WinOGCP, please contact us at the contact information on the front cover.

<b>Manual No.:</b>	WINOGCP-OM
<b>Document Version:</b>	1.3
<b>Release Date:</b>	January 15, 2013

# Table of Contents

---

<b>Chapter 1</b>	<b>Introduction . . . . .</b>	<b>1-1</b>
	Overview .....	1-1
	Manual Conventions.....	1-2
	Technical Specifications.....	1-2
	Contact Cobalt Digital Inc.....	1-3
<b>Chapter 2</b>	<b>Installation and Setup . . . . .</b>	<b>2-1</b>
	Installing WinOGCP on a PC.....	2-1
	Installing WinOGCP Update Application File.....	2-5
<b>Chapter 3</b>	<b>Operating Instructions. . . . .</b>	<b>3-1</b>
	Overview .....	3-1
	Control and Display Descriptions.....	3-1
	Rotating WinOGCP “Knobs” .....	3-1
	Network Setup .....	3-4
	Using the Control Panel To Select and Monitor Frame Cards .....	3-4
	Device and Parameter Submenu Overview .....	3-4
	Selecting a Device .....	3-6
	Displaying and Adjusting Device Parameters .....	3-7
	System Information/User Interface Functions.....	3-9
	Troubleshooting.....	3-13
	In Case of Problems.....	3-13
<b>Appendix A</b>	<b>Supplemental Information. . . . .</b>	<b>A-1</b>
	Overview .....	A-1
	Changing Frame Network Settings and/or Card Assignments.....	A-2
	Editing a Configuration File .....	A-3

---

**This page intentionally blank**

# Introduction

## Overview

This manual provides installation and operating instructions for the WinOGCP Virtual Remote Control Panel (also referred to herein as the Control Panel).

The manual consists of the following chapters:

- **Chapter 1, “Introduction”** – Provides information about this manual and what is covered. Also provides general information regarding the WinOGCP Virtual Remote Control Panel.
- **Chapter 2, “Installation and Setup”** – Provides instructions for installing the WinOGCP Virtual Remote Control Panel.
- **Chapter 3, “Operating Instructions”** – Provides instructions for using the WinOGCP Virtual Remote Control Panel to monitor and control parameter values for cards.
- **Appendix A, “Supplemental Information”** – Provides supplemental information for configuring the Control Panel.

The WinOGCP Virtual Remote Control Panel conveniently and intuitively provides parameter monitor and control of video and audio processing terminal equipment meeting the open-architecture openGear™ standard for Cobalt® COMPASS® and FUSION3G® cards. It installs as an application on a standard Windows® XP PC. All communication with the frame occurs over an Ethernet network, allowing fast interaction with multiple frames.

WinOGCP Virtual allows quick and intuitive access to hundreds of cards in a facility, and can monitor and allows adjustment of up to eight parameters at one time. WinOGCP has background settings that are optimized for bright and low light environments. The large size high-resolution graphics utilize the full width of the desktop, offering clear graphics and easy to read text. Eight dials corresponding to each of the eight displayed parameters allow ease in accessing and controlling the displayed parameters.

WinOGCP Virtual is totally compatible with the openGear™ control software DashBoard™; any changes made with either system are reflected on the other.

This chapter contains the following information:

- **Manual Conventions, p. 1-2**
- **Technical Specifications, p. 1-2**
- **Contact Cobalt Digital Inc., p. 1-3**

## Manual Conventions

In this manual, all keys, displays, and connectors are shown using the exact name shown on the Control Panel itself. Examples are provided below.

- Keys are shown like this: **Select Device**
- Display messages are shown like this:

<p><b>Gain</b></p> <p><b>20.5 dB</b></p>
--

In this manual, the terms below are applicable as follows:

- **Control Panel** refers to the WinOGCP Virtual Control Panel.
- **Frame** refers to the 8321 (or similar) frame that houses the Cobalt Digital Inc. COMPASS® and/or FUSION3G® cards.
- **Device** and/or **Card** refers to a COMPASS® and/or FUSION3G® card.
- **System** and/or **Video System** refers to the mix of interconnected production and terminal equipment in which the Control Panel and COMPASS® and/or FUSION3G® cards operate.

## Technical Specifications

**Table 1-1 Technical Specifications**

Item	Characteristic
PC Requirements	Intel® Pentium 4® processor; Microsoft® XP SP2 or Vista 128 MB RAM 32 MB of hard-disk space 256 minimum-color video adapter card
Controls	<ul style="list-style-type: none"> <li>• Eight control knobs; flexible function based on operating mode.</li> <li>• Numeric keypad and control buttons</li> </ul>

---

## Contact Cobalt Digital Inc.

Feel free to contact our friendly and professional support representatives for any of the following:

- Name and address of your local dealer
- Product information and pricing
- Technical support
- Upcoming trade show information

<b>Phone:</b>	(217) 344-1243
<b>Fax:</b>	(217) 344-1245
<b>Web:</b>	<a href="http://www.cobaltdigital.com">www.cobaltdigital.com</a>
<b>General Information:</b>	info@cobaltdigital.com
<b>Technical Support:</b>	support@cobaltdigital.com

---

**This page intentionally blank**



---

# Installation and Setup

## Installing WinOGCP on a PC

**Note:** Through the purchase/licensing procedure, WinOGCP is bound to the host PC NIC MAC address, thereby only allowing its use with a specified unique PC. Make sure before starting that the PC where WinOGCP is being installed is the intended installation target.

Installing WinOGCP consists of the following basic steps which are described in detail below.

- Running the WinOGCP.exe file to download the application to your machine.
- Validating the installation using the License Key for the installed instance.
- If ordered, activating the license for option **+LM** (Loudness Metering).
- Copying your unique *primary.txt* configuration file to WinOGCP so it can see and control the cards in your frame(s).

Install the Control Panel on PC as described below. This downloads the file to your target PC.

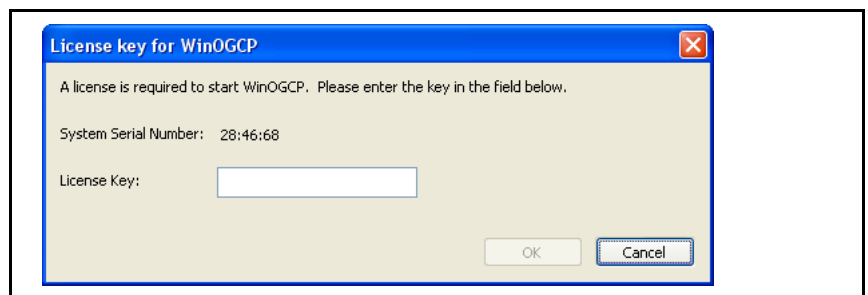
1. Copy the WinOGCP.exe file and the *primary.txt* file to your desktop.
2. Click and run the WinOGCP.exe file.

3. The InstallShield Wizard opens. Follow the prompts to install WinOGCP.



4. Using the e-mail address provided, request the license key for the WinOGCP instance being installed. **Send the e-mail from the machine in which WinOGCP is being installed.**

You will shortly thereafter receive a License Key number. Enter the license key number by copying and pasting it into the screen shown below. Click **OK** after the key is entered.



5. WinOGCP now opens and appears on your computer. Perform the steps below for additional licenses and setup for your unique configuration.
6. If option **+LM** (Loudness Metering) was also ordered, enter the license key and activate as follows (if **+LM** is not ordered, proceed to step 7):
  - 6.1 On WinOGCP, click on **Select Device** and select **0 This Control Panel**.
  - 6.2 Using any knob or the **Select Submenu** key, select **Licensed Features**.
  - 6.3 Note the **Hardware ID** now displayed on WinOGCP. Call Cobalt Digital and provide this number to receive your feature key. You will be given a 10-digit decimal string that is your feature key.

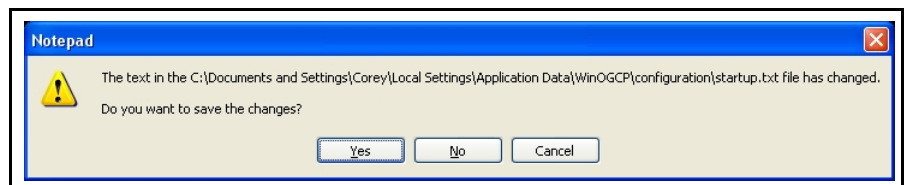
**Note:** If the string contains leading zeros, these must also be entered. String must be 10 digits. If the string is mis-entered, the entered string value appears in red. Press **Cancel** and re-enter the string.

- 6.4 Enter the 10-digit string using the WinOGCP numeric keypad, and then click **Enter**. After clicking **Enter**, the correct entry and feature acknowledgement is displayed as shown in the example below.

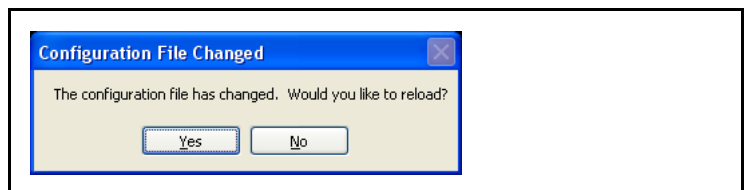
**Loudness Meter**  
**4144600267**

7. At this point, your WinOGCP is now ready to receive the settings in the *primary.txt* configuration file that has been prepared by Cobalt for your frame/card slot and controls specified by you at pre-purchase.

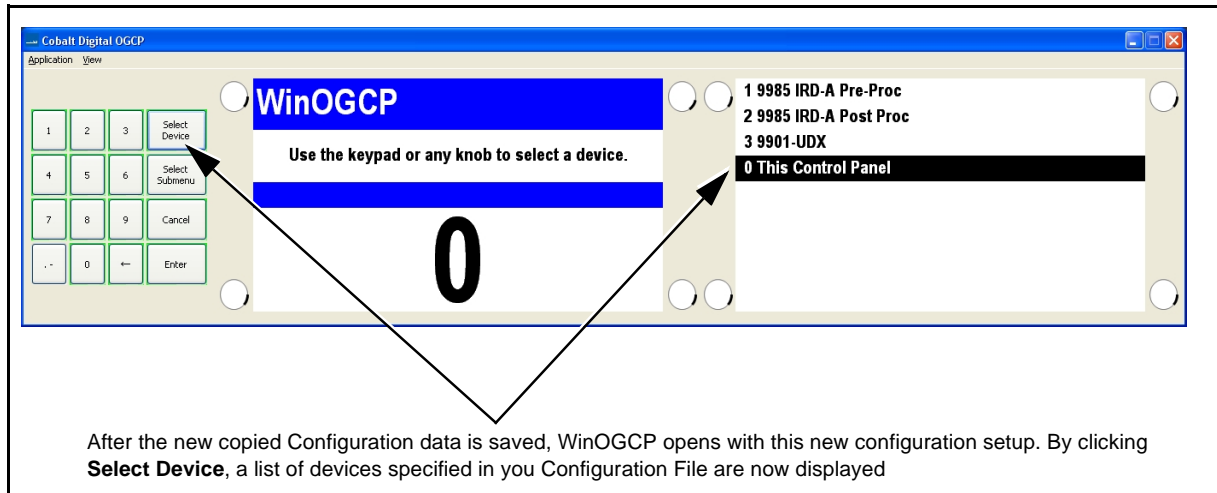
- 7.1 On the WinOGCP task bar, select **Application > Edit Configuration**.
- 7.2 Open the configuration file supplied by Cobalt and copy its contents in its entirety (Select All).
- 7.3 In the open WinOGCP configuration file, paste to replace the default placeholder contents with that on the clipboard. When the screen shown below appears, click **Yes**.



- 7.4 When the prompt shown below appears, click **Yes** to load the changes and restart WinOGCP with your configuration data.



8. WinOGCP now restarts and has as device selections as specified in your configuration file (as shown in the example below).



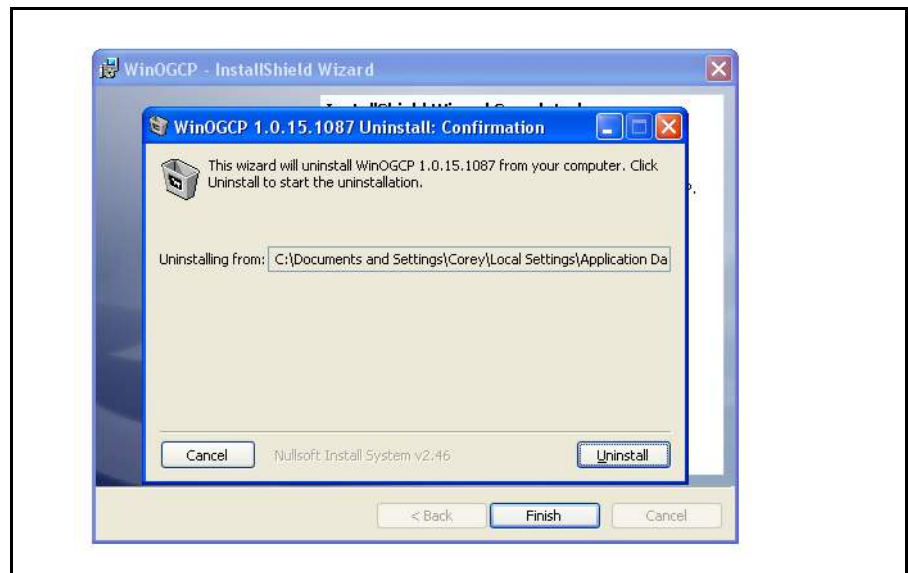
9. Your WinOGCP is now ready for use. Proceed to Chapter 3, “Operating Instructions”.
10. When WinOGCP is closed, it can now be accessed by going to **Start > All Programs**, and then selecting **WinOGCP** from the list of all your programs.

### Installing WinOGCP Update Application File

If an upgrade becomes available for your WinOGCP application, it can be upgraded by going to **[www.cobaltdigital.com](http://www.cobaltdigital.com) > Support > Firmware**.

From this link, you can select an upgrade to the WinOGCP application. The installer will simply replace the existing executable with a new re-install of the new executable on your PC – all WinOGCP settings, configuration, and licenses will be retained, with WinOGCP immediately ready for use.

**Note:** On Windows® XP, the prompt shown below will appear in the course of applying the upgrade. It is recommended to follow the prompt to remove any previous obsoleted version.



---

**This page intentionally blank**

# Operating Instructions

## Overview

This chapter contains the following information:

- Control and Display Descriptions, p. 3-1
- Network Setup, p. 3-4
- Using the Control Panel To Select and Monitor Frame Cards, p. 3-4
- Troubleshooting, p. 3-13

## Control and Display Descriptions

### Rotating WinOGCP “Knobs”

WinOGCP uses simulated knobs that act similar to actual rotary controls as shown in Figure 3-1.

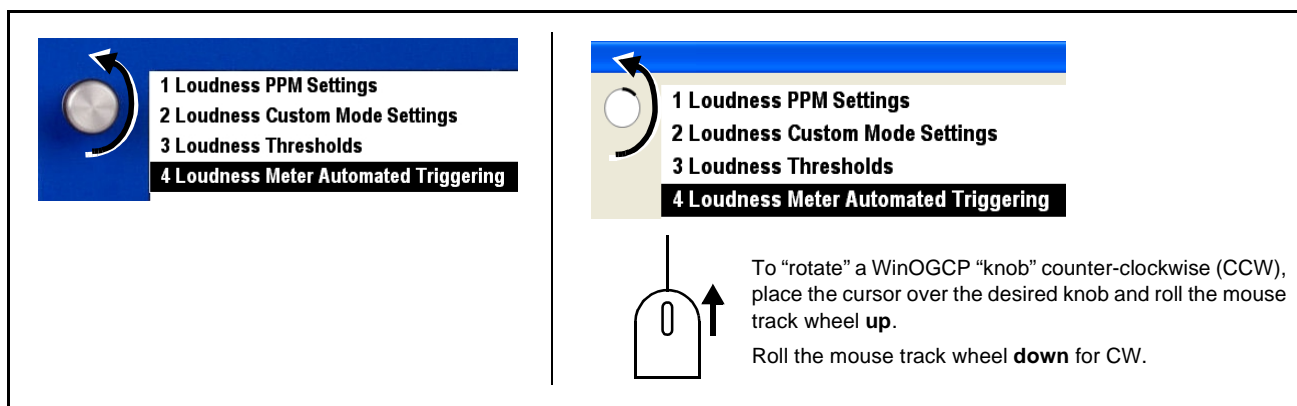


Figure 3-1 WinOGCP Knobs

In its normal operating use, the Control Panel allows the user to simultaneously display up to eight parameter settings of a selected COMPASS® and/or FUSION3G® card and, in turn, remotely adjust the parameter value or selection using the control knob adjacent to the displayed parameter with no keypad intervention being required. Figure 3-2 provides an example and describes this function.

Just like a potentiometer on a console, rotating the control knob adjacent to its display area (in this example, "Emb 01 Gain" and its corresponding knob) changes the value of the displayed numeric parameter.

In this example, rotating the knob clockwise increases the value in tenth-unit steps. Rotating the knob counter-clockwise similarly reduces the value of the corresponding parameter.

Where the display shows a selection choice, the knob acts as a rotary selector switch. In this example, rotating the knob selects between **On** and **Off** for Emb 01 Mute.

**Note:**

- Values displayed at any time is the actual value as set on the card.
- Units characters (such as "dB" or "deg") are displayed per ordered configuration preference and may not appear on some control panel displays.

**Figure 3-2 Basic Display/Knob Function**

Figure 3-3 shows and describes the front panel control knobs, keys, and displays.



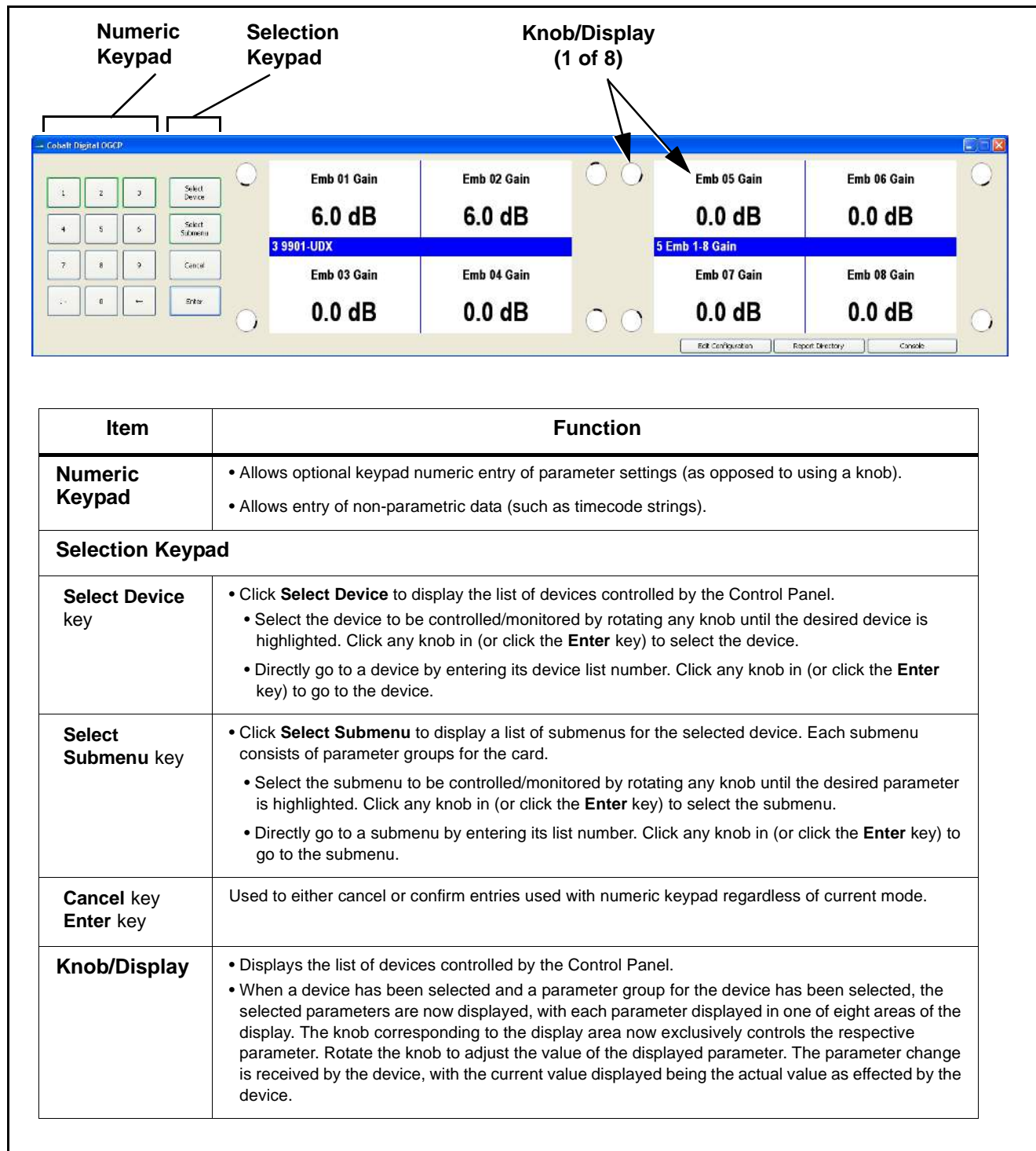


Figure 3-3 WinOGCP Virtual Remote Control Panel Controls and Displays

- Note:**
- Although the keypad and **Enter** key can always be used to enter a selection, where the Control Panel displays a list of selection options it is more convenient to simply rotate a knob to select the option, and then click the knob in to enter the selection.
  - For numeric parameters (such as level settings), the knob ballistics are such that rapid rotation of the knob yields coarse wide-span adjustment of the parameter. Slower or incremental rotation of the knob yields correspondingly finer adjustment, eventually providing step adjustment corresponding to the decimal precision of the displayed value.

## Network Setup

Typically, your Control Panel is delivered with all network settings and card assignments configured per your instructions for your frames and cards that are to be controlled by the Control Panel. This is facilitated by the “Setting Up Your Cobalt® Remote Control Panel” fill-in sheet that we offer you, or per your instructions.

- If your Control Panel **is** configured with your custom settings, it is now ready for use. Proceed to Using the Control Panel To Select and Monitor Frame Cards below.
- If your Control Panel **is not** configured with your custom settings, the Control Panel must first be configured to work with your network and the frames to be controlled by the Control Panel. These configuration changes are easily accomplished using the instructions in Appendix A, Supplemental Information.

## Using the Control Panel To Select and Monitor Frame Cards

Select devices (cards) and monitor/adjust the card parameters as described in this section.

### Device and Parameter Submenu Overview

Each device has its user parameters organized into **submenu** groups, as shown in the example on the next page.

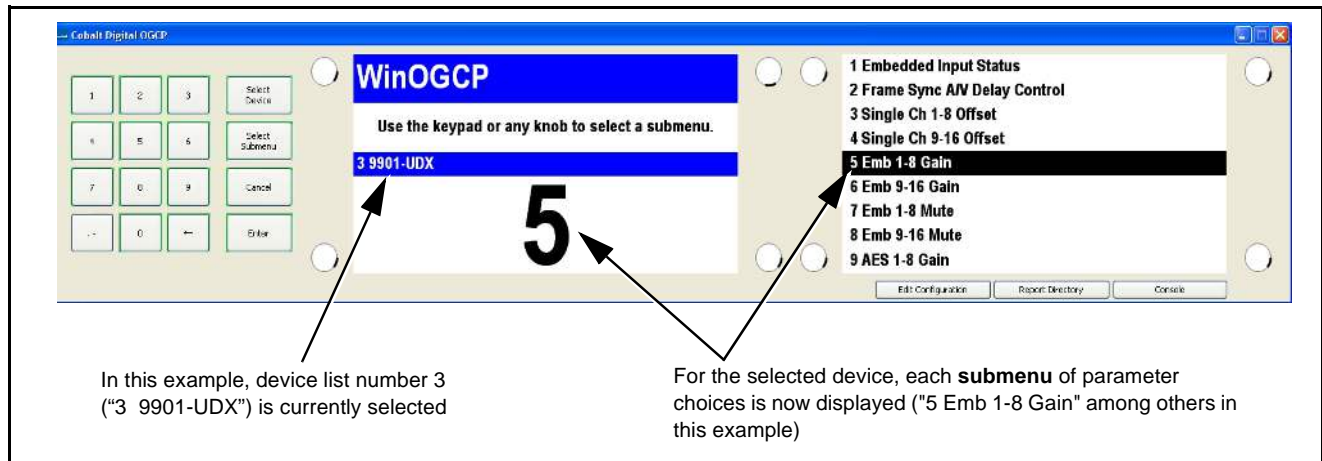
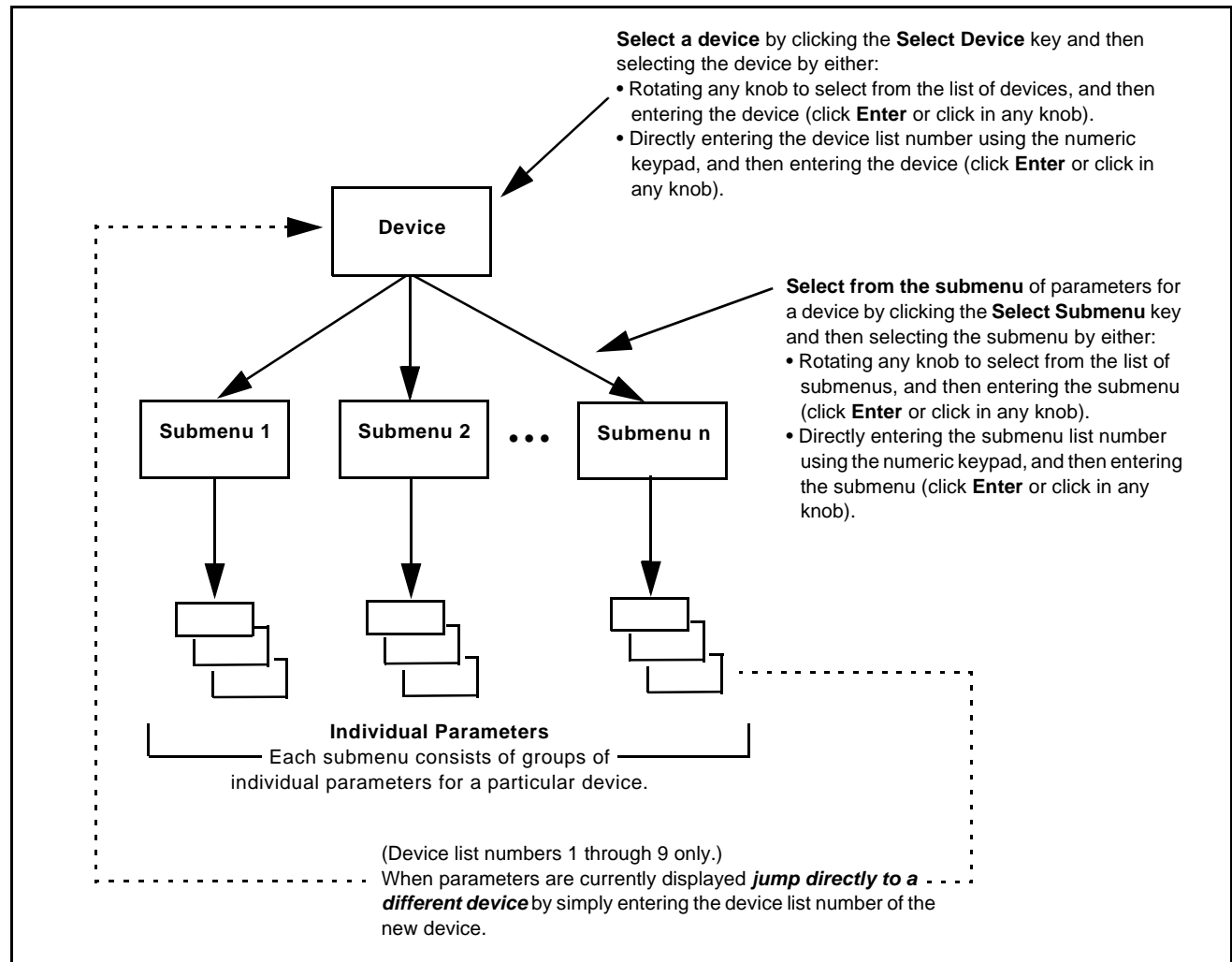


Figure 3-4 shows how a device and its respective submenus are organized, and also provides an overview of how to navigate between devices and submenus.



**Figure 3-4 Device and Parameter Submenu Overview**

## Selecting a Device

1. Click the **Select Device** key. The Select Device screen is displayed (as shown in the example below).

This display shows the list order number of the device that is ready for selection

This display shows the devices assigned to the Control Panel.

- Rotate any knob to select from the list of devices. The device selected using a knob is displayed with a reversed background (in this example, "3 9901-UDX"). Click any knob in to select the device.
- Directly enter a device by entering its list number using the numeric keypad, and then clicking **Enter** or clicking in any knob).

2. Select a device by either:

- Rotating any knob to select from the list of devices. When the desired device is selected in the right display, click any knob in to display the device.
- Directly entering the device list number using the numeric keypad, and then clicking **Enter** or clicking in any knob).

When the selected device is displayed, device parameters are displayed (as shown in the example below).

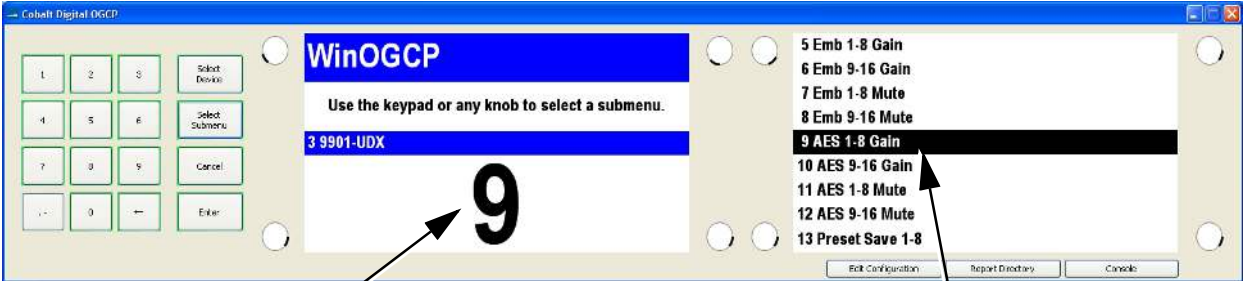
The currently displayed device and its list order is shown here

Displayed parameter and its associated control knob ("Emb 04 Gain", being 1 of 8 parameters shown in this example)

The currently displayed parameter submenu and its list order number is shown here

### Displaying and Adjusting Device Parameters

1. Display parameter submenus by clicking the **Select Submenu** key. The available parameter group choices are displayed on the right display (as shown in the example below).




This display shows the parameter group submenu list number that is ready for selection (in this example, submenu "9")

This display shows available parameter group submenus for the displayed device.

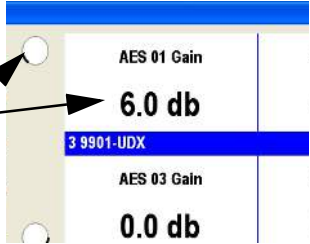
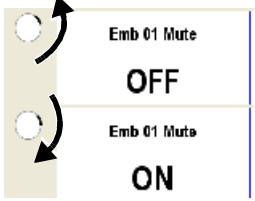

- Rotate any knob to select from the list of parameters. The parameter selected using a knob is displayed with a reversed background (in this example, "9 AES 1-8 Gain").
- Directly enter a parameter submenu by entering its list number using the numeric keypad, and then clicking **Enter** or clicking in any knob.

2. Select a submenu by either:
  - Rotating any knob to select from the list of submenus. When the desired submenu is selected in the right display, click any knob in to display the submenu. (The example below now shows submenu 2 displayed.) Enter the submenu by clicking any knob in.
  - Directly entering the submenu list number using the numeric keypad, and then clicking **Enter** or clicking in any knob).



This display now shows submenu 9 items for the selected device. The parameter group 9 list order number and title is displayed (in this example, "9 AES 1-8 Gain")



3. Depending on the type of parameter displayed, change the setting as follows:

Parameter Type:	Change setting by:	
<b>Numeric (scalar) value</b> using knob to adjust	<ul style="list-style-type: none"> <li>Rotate the knob adjacent to the parameter to select the desired setting. The displayed value is now the current setting for the parameter.</li> </ul> <p><b>Note:</b> Clicking and holding knob in sets value to default setting where applicable.</p>	<p>Rotate the knob clockwise or counter-clockwise to increase or decrease the value of the corresponding parameter</p> 
	<ul style="list-style-type: none"> <li>Rotate the knob adjacent to the choice to select the desired setting. The displayed value is now the current setting for the parameter.</li> </ul>	
<b>Selection from list</b> using knob to select	<ul style="list-style-type: none"> <li>Where multiple choices are present, click the knob adjacent to the parameter. The parameter is now displayed in reversed background, indicating a selection can now be made.</li> </ul> <p>The available choices for the parameter are now displayed on the opposite display. Rotate the knob adjacent to the parameter to select from the available choices.</p> <ul style="list-style-type: none"> <li>After selecting a change, click the knob adjacent to the parameter to apply the change. The changed value is now the current setting (as shown in the example here).</li> </ul>	 <p>Rotate the knob adjacent to the parameter to select from available choices</p> <p>Reversed background indicates parameter is selected</p>
	<ul style="list-style-type: none"> <li>Click the knob adjacent to the parameter. The parameter is now displayed in reversed background, indicating a change can now be made.</li> <li>Using the numeric keypad, enter the desired changed numeric value (or selection from list). The <b>←</b> key clears each keystroke. The <b>Cancel</b> key clears the entire entry and reverts to the original setting.</li> <li>Click the knob adjacent to the parameter (or click the <b>Enter</b> key) to apply the change.</li> </ul> <p><b>Note:</b> Out-of-range entries are indicated by red text being displayed. Click <b>Cancel</b> key to clear the entry.</p>	
<b>Numeric value or selection from list</b> using keypad		

4. To select another parameter group for the currently displayed device, click **Select Submenu** and select the parameter group as described in steps 1 and 2 above.
5. To select another device, click **Select Device** and select the device as described in Selecting a Device, p. 3-6.

**Note:** If a different device is selected, submenu and parameter value settings are retained for the previous device. When the previous device is again selected, its settings are again displayed and take effect.

## System Information/User Interface Functions

**Note:** Where the Lock icon (  ) appears, this indicates values cannot be changed in the currently displayed screen. Where the “P” icon (  ) appears, this indicates to click the adjacent knob to open the value for editing.

### Checking System Information

The System Information screen shows application build, kernel build, and processor version information for the Control Panel. Check system information as follows:

1. Click the **Select Device** key and then click the **0** key.
2. Click the **Select Submenu** key. The Control Panel Submenu selection screen is now displayed.
3. Rotate any knob to select

System Information

4. Click any knob in to display current system information.
5. Exit the Current Network Settings screen as follows:
  - Click the **Select Submenu** key to go to other Control Panel Submenu choices.
  - Click the **Select Device** key to exit the Control Panel Submenu.

### Setting User Interface Preferences

The Control Panel User Interface submenu allows display appearance and knob/key hold time preferences to be set as described below.

Adjust the backlight brightness level of the displays as follows:

1. Click the **Select Device** key and then click the **0** key.
2. Click the **Select Submenu** key. The Control Panel Submenu selection screen is now displayed.

3. Rotate any knob to select

User Interface

4. Click any knob in to enter User Interface mode.
5. Select the desired User Interface item (described below) by clicking the knob adjacent to the item and rotating the knob.

Item	Function
<b>Backlight Level</b>	With Color Theme set to Bright, adjusts the saturation of both the text and the background. With Color Theme set to Dim, adjusts the brightness of the text (background is always full black).
<b>Color Theme</b>	<ul style="list-style-type: none"> <li><b>Bright</b> setting provides white background with black text.</li> <li><b>Dim</b> setting provides reversed background with white text and black background.</li> </ul>
<b>Key/knob hold time</b>	Sets the required time (in seconds) that a knob or key must be held for the respective setting to return to its default value.

6. Exit the User Interface screen as follows:
  - Click the **Select Submenu** key to save the changes and go to other User Interface submenu choices.
  - Click the **Select Device** key to save the changes and exit the User Interface submenu screen.



## Setting Knob Ballistics

The default knob ballistics provides rapid access to values across the range of an item while providing ease of fine adjustment. The ballistics can be tailored using the submenu described below.

- Note:**
- This submenu may not be present on all Control Panels.
  - Settings resulting in very large adjustment spans may require very slow knob increment/decrement rotation to make a desired selection (especially for items in a list). Always test knob action when making changes. Knob ballistic setting can be reset to default by holding knob in.

1. Click the **Select Device** key and then click the **0** key.
2. Click the **Select Submenu** key. The Control Panel Submenu selection screen is now displayed.
3. Rotate any knob to select

### Knob Ballistics

4. Click any knob in to enter Knob Ballistics mode.
5. Listed and described below are the knob ballistics controls. Select the desired item by clicking the knob adjacent to the item and rotating the knob.

Item	Function
<b>Jump Interval (major and minor)</b>	<ul style="list-style-type: none"><li>• Greater settings allow for greater value increment or decrement accumulation while knob is being rotated.</li><li>• Lesser settings allow for finer value increment or decrement accumulation while knob is being rotated.</li></ul>
<b>Jump Multiplier (major and minor)</b>	<ul style="list-style-type: none"><li>• Greater settings allow for greater spans in value increment or decrement while knob is being rotated.</li><li>• Lesser settings allow for smaller spans in value increment or decrement while knob is being rotated.</li></ul>

### **Saving and Loading Card Presets On WinOGCP**

WINOGCP allows remote access to card DashBoard™ presets 1-8, allowing a Preset 1 thru Preset 8 to be saved via WinOGCP (for example, changing settings locally using WinOGCP and then saving the settings as a global preset using one of the WinOGCP **Preset Save** buttons).

WinOGCP can also load (call) a preset (limited to Preset 1 thru Preset 8) stored globally on a card (for example, loading a preset already residing on the card using one of the WinOGCP **Preset Load** buttons).

**Note:** When interfacing with Fusion3G® cards, the Preset Save function will not work unless Preset Protect is set to Unprotected within DashBoard. Because of this, it is easier to perform preset saves using DashBoard rather than the control panel for Fusion3G® cards, and in turn use the control panel only for preset loading.

**Note:** WinOGCP does not provide direct user access for preset naming (preset names can be edited on WinOGCP only via the WinOGCP configuration file). It is easiest to change preset names using DashBoard (as described in the card Product Manual).

**Save** card settings using WinOGCP **Preset Save 1-8** as follows:

1. Select the desired card using **Select Device** key.
2. Click **Select Submenu** and select **Preset Save 1-8**.
3. Click the knob (**1** thru **8**) for the preset to be written to and saved.

All card settings existing on the card or locally changed using WinOGCP are now saved to the selected preset. The settings saved on this preset are saved on the card itself and apply globally for all remote controls. Presets can be redefined by any remote control system (WinOGCP, OGCP-9000 or DashBoard) connected to the card as desired.

**Load** card settings using WinOGCP **Preset Load 1-8** as follows:

1. Select the desired card using **Select Device** key.
2. Click **Select Submenu** and select **Preset Load 1-8**.
3. Click the knob (**1** thru **8**) for the preset to be loaded (called).

The loaded preset is now engaged and shown in all card remote control systems (WinOGCP, OGCP-9000 and DashBoard card display).

## Troubleshooting

In the event that the Control Panel does not function as described in this manual or as expected, use Table 3-1 to perform basic troubleshooting.

**Table 3-1 Troubleshooting by Symptom**

Symptom	Check	Corrective Action
<b>No Card in Slot</b> displayed.	<ul style="list-style-type: none"> <li>Select another device and check the displays.</li> </ul>	<ul style="list-style-type: none"> <li><b>If other devices display properly</b>, the device showing this message may not be communicating with the Control Panel. Check the following: <ul style="list-style-type: none"> <li>Make certain the card is installed in the intended frame and slot location.</li> </ul> </li> <li><b>If all other devices do not display properly</b>, the Control Panel may not be connecting to the LAN. Check the following: <ul style="list-style-type: none"> <li>Make certain the Ethernet cable on the PC hosting WinOGCP is properly connected and showing activity on the LAN switch. Use <code>ping-</code> to check the connection.</li> <li>WinOGCP uses a configuration file associated with its instance to connect to frames and card slots. If the frame/card slots have changed from that in the configuration file, the file must be edited to point to the intended frame(s)/card slot(s). Refer to Editing a Configuration File in Appendix A, "Supplemental Information" for Control Panel configuration instructions.</li> </ul> </li> </ul>
<b>Missing Feature</b> displayed.	<ul style="list-style-type: none"> <li>Card not defined in configuration file.</li> <li>Card not licensed for displayed feature controls.</li> </ul>	<ul style="list-style-type: none"> <li>The configuration file defines the card and its parameters exposed to WinOGCP control. If a different (new) card is to be added to the device list, contact Product Support to obtain a new configuration file.</li> <li>If WinOGCP is licensed for certain options (such as +LM Audio Loudness Meter), the host must also be similarly licensed. (+LM option requires both card (+LM-C) and control panel (+LM-P) co-licenses.)</li> </ul>
WinOGCP cannot be installed on PC.	—	<ul style="list-style-type: none"> <li>WinOGCP can only be used on a PC having a MAC address that is specified in the purchase of WinOGCP. The WinOGCP program will not operate on other hosts having dissimilar MAC addresses.</li> </ul>

### In Case of Problems

Should any problem arise with your Control Panel that was not solved by the information in this section, please contact the Cobalt Digital Inc. Technical Support Department. (Contact information is supplied on the front cover of this manual.)

---

**This page intentionally blank**

# *Supplemental Information*

## Overview


Typically, WinOGCP is typically delivered with all network settings and card assignments configured per your instructions for your frames and cards that are to be controlled by WinOGCP. This is facilitated by the “Setting Up Your Cobalt® Remote Control Panel” fill-in sheet that we offer you, or per your instructions.

An example of a filled-in sheet is shown in Figure A-1. As shown, this information consists of the following:

- IP address of the frame(s) connecting to WinOGCP
- Card assignments for each frame(s)

By providing us this information before you receive your WinOGCP, it will be immediately ready to use.

Should the need arise to change any of the following, use the Changing Frame Network Settings and/or Card Assignments instructions in this appendix.



**Cobalt Digital Inc.**  
2406 E. University Ave.  
Urbana, IL 61802  
Voice 217.344.1243 • Fax 217.344.1245  
www.cobaltdigital.com

The form below can be used to sort out and arrange the setup of your Control Panel. Print or photocopy as many as needed.

**Customer Name:** XYZ Inc.

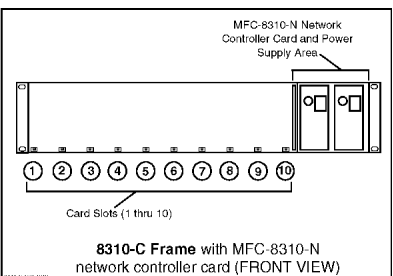
**Area/Plant:** Post 1A

**PO Number:** CDI-CP-XYZ

**Date:** 10/2/09

**Control Panel Name:** Post 1A-5

**Control Panel IP Address:** 192.168.0.249



8310-C Frame with MFC-8310-N network controller card (FRONT VIEW)

**Frame Name/Number:**

Slot	Card Model	Name/Description
1	9061	Post 1A Format
2	9083	Post 1A Audio/F5
3	9323	Post 1A Audio #2
4	9323	Post 1A Audio #3
5	9323	Post 1A Audio #4
6	9323	Post 1A Audio #5
7		
8		
9		
10		

Frame IP Address: 192.168.0.55

*Figure A-1 Example "Setting Up Your Cobalt® Remote Control Panel" Sheet*

## Changing Frame Network Settings and/or Card Assignments

WinOGCP uses a configuration file (which is accessible directly from the WinOGCP controls) to perform the following:

- Connect WinOGCP to its intended frame(s).
- Configure WinOGCP to provide control functions applicable to particular COMPASS™ and/or FUSION3G™ cards. In this manner, WinOGCP displays and provides the control functions applicable to the cards controlled by WinOGCP.
- Correlate the card model list displayed on WinOGCP with the physical order/assignment of cards within the frame.

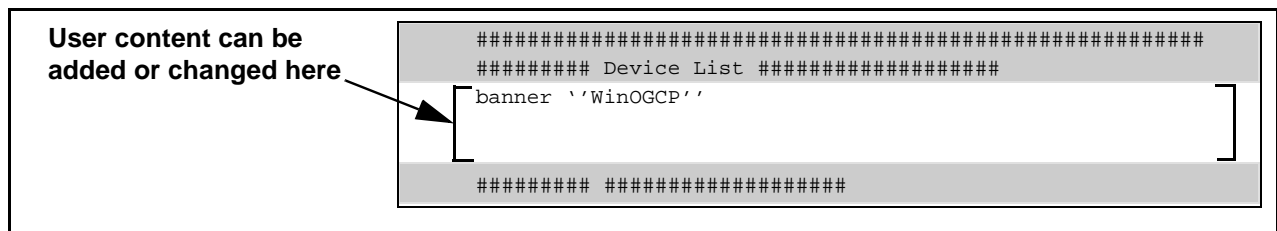
If you desire, you can perform minor edits to a configuration file to change a frame IP address, or card slot locations and/or additions within a frame as described below.

## Editing a Configuration File

(See Figure A-2) WinOGCP configuration file can be field-edited to change frame IP addresses or card assignments and/or slot locations as described below.

- Note:**
- Always save a copy (or copy/paste to an editor) of the unedited configuration file, thereby preserving the original file should it be necessary to use the original file.
  - Regardless of devices and their order in device list, Device 0 is always WinOGCP itself.
1. On WinOGCP, click the **Edit Configuration** button. This opens the startup.txt file that sets the configuration.
  2. Shown below is the section of the configuration file where you can define frame IP address and card assignments to suit the installation.

The user-editable area of the file is the area defined by the  
## Device List ## portion of the file as shown below.



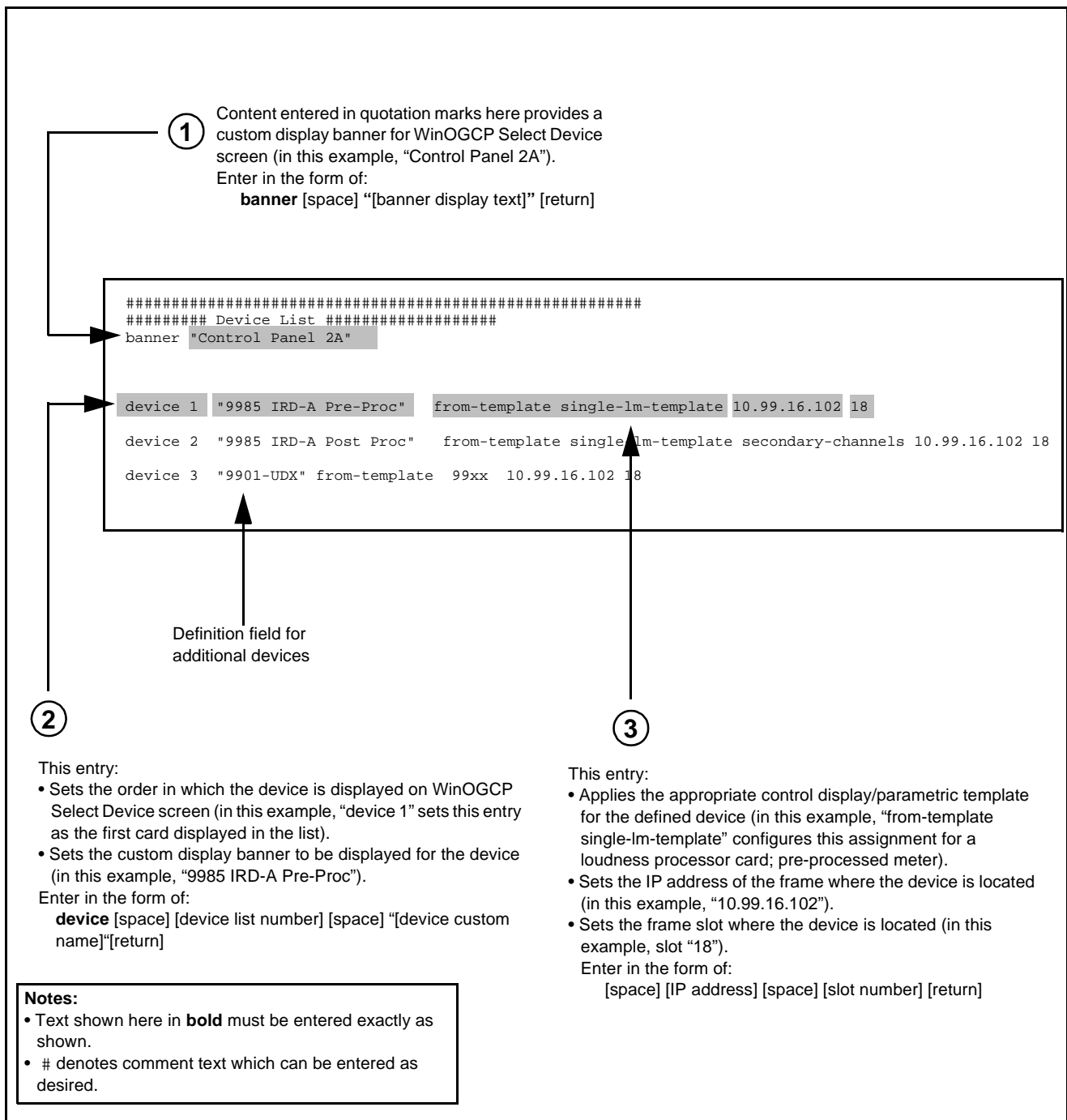


Figure A-2 Device Definition Field Descriptions



**CAUTION**

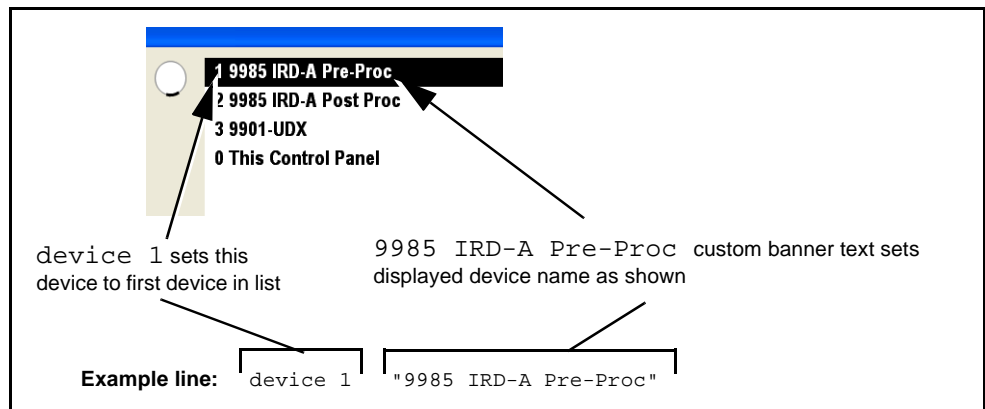
**Do not edit or alter the file contents preceding the**

**## Device List## section.**

3. Note the convention used for entering user definitions, as shown in the example in Figure A-2.
4. Noting the convention described in Figure A-2, configure WinOGCP by editing configuration content to the downloaded configuration file as follows:
  - 4.1 Enter the banner text to be displayed for WinOGCP Select Device screen ( ① in Figure A-2). Enter any text as desired to help identify WinOGCP and its specific function.
  - 4.2 Assign and enter the device list number and the device custom display banner text for the first device. ( ② in Figure A-2).

This sets the order in which the device appears in the Select Device display list, as well as its displayed name. ( ② in Figure A-2).

Enter any text as desired to help identify the device and its specific function. An example is shown below.



- 4.3 Set the IP address of the frame where the device is to be located ( ③ in Figure A-2).
- 4.4 Set the card slot where the device is to be located ( ③ in Figure A-2).
- 4.5 Repeat steps 4.2 through 4.4 for additional devices.
- 4.6 Save the edited configuration file.
5. Close the file after edits. WinOGCP then provides a notice that configuration has changed.

**This page intentionally blank**





**Cobalt Digital Inc.**

2406 E. University Ave.  
Urbana, IL 61802  
Voice 217.344.1243 • Fax 217.344.1245  
[www.cobaltdigital.com](http://www.cobaltdigital.com)