

## COBALT SAPPHIRE BBG-2110-2Hi2Ho/4Sio • ST 2110/IPMX/JPEG-XS\* Dual-Channel Converter

**SAPPHIRE**  
CONVERTERS



The COBALT SAPPHIRE BBG-2110-2Hi2Ho/4Sio Dual-channel SMPTE ST 2110/IPMX to HDMI/SDI converter unit with two simultaneous HDMI 2.0 and SDI inputs and two simultaneous HDMI 2.0 and SDI outputs.

The unit features dual SFP cages with support for 10G and 25G Ethernet ports with an additional 1Gbps copper Ethernet port for out-of-band management.

Standard features include SMPTE ST 2022-7 seamless switching, NMOS IS-04/IS-05 control and management, both in-band and out-of-band, and uncompressed ST 2110-20 video.

\*Optional JPEG-XS compressed ST 2110-22 requires a license.

Note: The SAPPHIRE BBG-2110-2Hi2Ho/4Sio currently supports 1 path of 4K. The other path supports up to 1080p.

### FEATURES

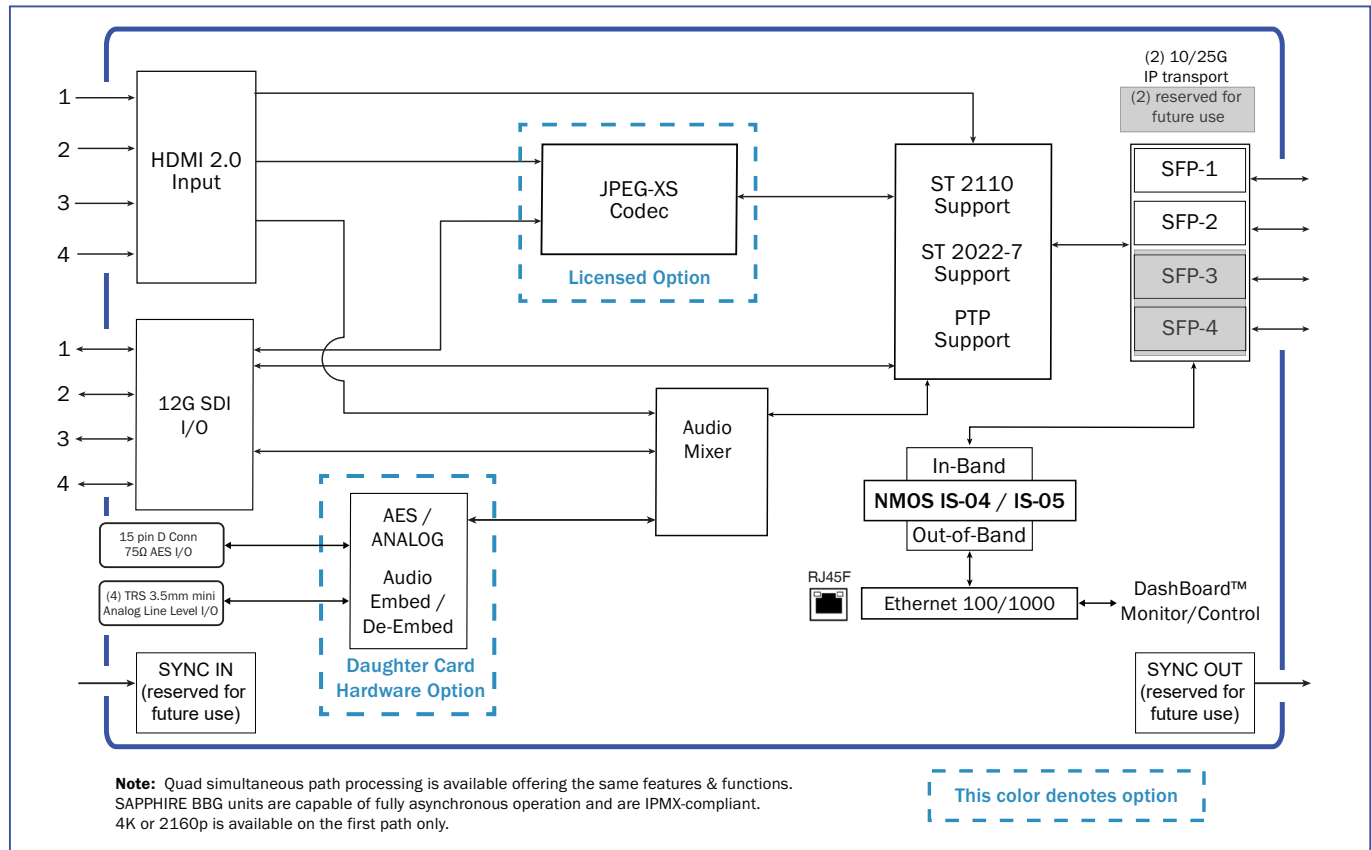
(4) SFP cages – (2) 10/25G IP transport and (2) reserved for future use	Supports resolutions of: 720p, 1080i, 1080p, and 2160p (2160p is available on the first path only) Supports frame rate of: 23.98, 24, 25, 29.97, 30, 50, 59.94, and 60
(2) SDI In (2) SDI out	Asynchronous operation
(2) HDMI 2.0 Inputs (2) HDMI 2.0 Outputs	IPMX ready
(1) RJ45 Ethernet Port 100/1000 for communication and control	(1) Reference Input (SYNC IN) and (1) Reference Output (SYNC OUT) (reserved for future use)
Supports NMOS IS-04/IS-05 control, both in-band and out-of-band and SMPTE ST 2022-7 Seamless Redundancy up to Class C for WAN operation	(2) 12VDC/4A Redundant Inputs Typical Power Consumption < 35 watts
*Optional audio - <b>BBG-2Hi2Ho/4Sio-AUD</b> with (4) 3.5mm TRS jacks for consumer analog audio levels. Configurable in software as Analog Inputs or Outputs.	Active cooling fan
Five Year Warranty	Dimensions 5.8" x 7.85" x 1.6"

### OPTIONS

- <b>BBG-2110-2Hi2Ho/4Sio-AUD</b> Audio daughter board - AES I/O and Analog audio I/O (must be factory-installed)	- <b>PS-40W-761K</b> Additional power supply for redundant operation
+ <b>JXS-SAPPHIRE-4K-QUAD</b> includes JPEG-XS license (Adds JPEG-XS TR-08 processing)	

## COBALT SAPPHIRE BBG-2110-2Hi2Ho/4Sio • ST 2110/IPMX/JPEG-XS\* Dual-Channel Converter

### BLOCK DIAGRAM



### ORDERING INFORMATION

#### BBG-2110-2Hi2Ho/4Sio

+ **JXS-SAPPHIRE-4K-QUAD** includes JPEG-XS license

- **BBG-2110-2Hi2Ho/4Sio-AUD** Audio daughter board - AES I/O and Analog audio I/O (must be factory-installed)

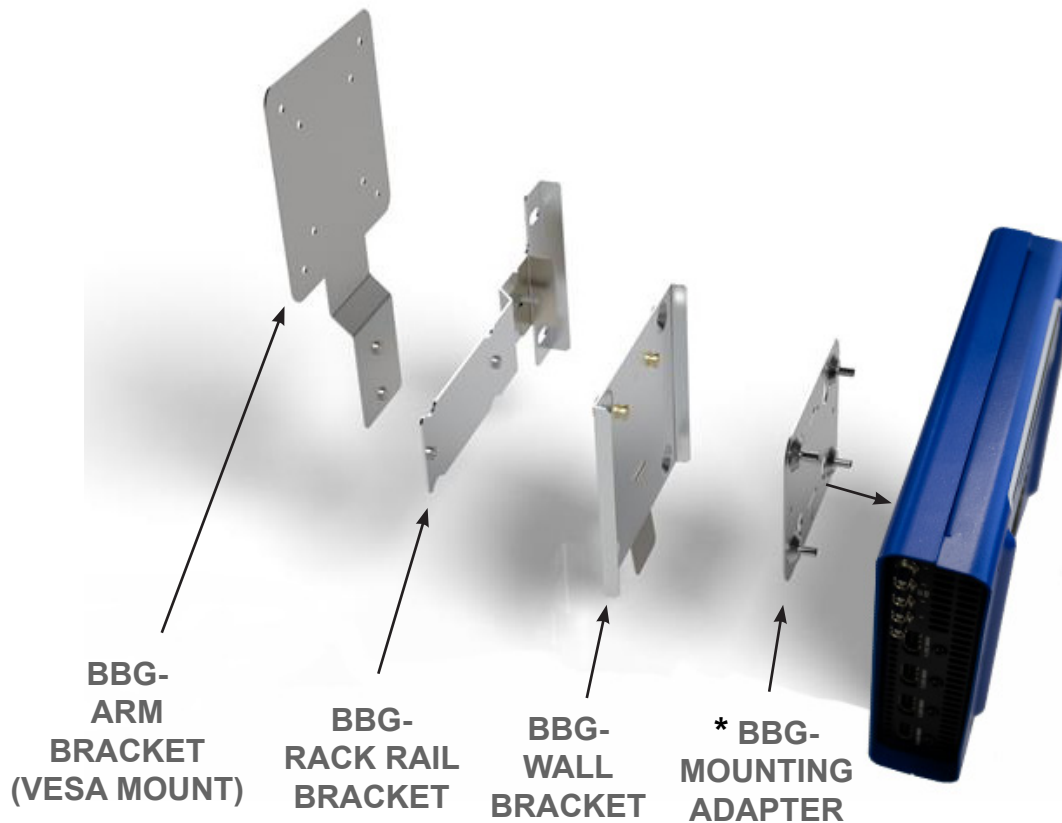
- **PS-40W-761K** Spare / Redundant power supply (1 power supply included with purchase)

#### Mounting Accessories:

- **SAPPHIRE BBG-Desk-top Stand**
- **SAPPHIRE BBG-Arm Bracket (VESA)**
- **SAPPHIRE BBG-Wall Bracket**
- **SAPPHIRE BBG-Monitor Rack Rail Bracket**

Note: All specifications are preliminary and subject to change.

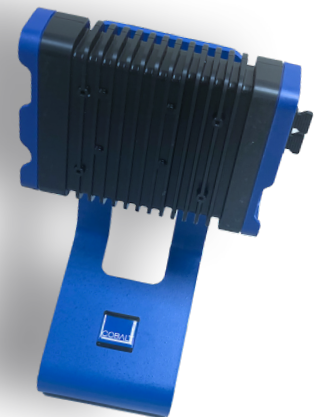
**COBALT SAPPHIRE BBG-2110-2Hi2Ho/4Sio • ST 2110/IPMX/JPEG-XS\* Dual-Channel Converter**



\* The mounting adapter is included with all bracket purchases

**Options and Accessories:**

- **SAPPHIRE BBG- Arm Bracket (VESA MOUNT)**
- **SAPPHIRE BBG- Rack Rail Bracket**
- **SAPPHIRE BBG- Wall Bracket**
- **SAPPHIRE BBG- Desktop Stand**
- **PS-40W-761K Spare / Redundant power supply**



**BBG-DESKTOP STAND**  
(SAPPHIRE BBG-2110-H/S model shown)